

# A century of excellence

In a century, since starting from humble beginnings in East London as a specialist manufacturer of teakwood outdoor furniture, we have become known and respected the world over for producing luxury outdoor furniture that strikes the highest note in quality and style. This is our story...



## 1920

Victor Tyrie and Frederick Barlow, together with a few others, start their own business in London, initially in Walthamstow, but then move to a disused horse stable behind a terrace of Victorian houses in nearby Leytonstone.



## 1949

After WWII, we resume production, initially using home-grown timber to produce rustic outdoor furniture, but later revert back to our tradition of using only the best teak, supplying fashionable and exclusive London stores of the time, such as Harrods, Maples, and Heals.



## 1970

After nearly 50 years, we move from Leytonstone to the old market town of Braintree in Essex. This move benefited from a scheme run by The Greater London Council in several designated expanding towns. The scheme provided housing for residents of London that were prepared to move away from areas being redeveloped and included some of our employees.



## 1986

The company opens an office and warehouse in the USA to serve its increasingly important market in North America.



## 1992

In response to a decision by the Indonesian government to stop the export of teak, which we had sourced from there since the early 1980s, we opened a factory on the island of Java. The factory was redeveloped and expanded to approximately 300,000 sq.ft.. Today, Barlow Tyrie proudly employs over 250 local people.



## 2020

Victor Tyrie's son, Peter and grandsons, Mark and James manage the company, making Barlow Tyrie a truly family business with a continuing legacy of designing and manufacturing some of the finest outdoor furniture money can buy.

## Marks Hall Estate, Essex, UK

### Inspiration

Outline: Over 40,000 visitors a year come to explore Marks Hall Estate's world-class arboretum, taste home-cooked food and delicious cakes at Orchard Kitchen, and browse the plant centre and shop. Marks Hall Estate has been a favourite of senior citizens for many years, but of late has seen an increase in young families coming to enjoy Japanese maple gardens and lakes that feature many easily walkable paths.

Solution: Barlow Tyrie has been an essential supplier to Marks Hall Estate for more than 20 years, regularly supplying memorial benches, with plaques and inscriptions, for those that wish to remember loved ones at their favourite walking spots.

Marks Hall Estate continues to choose Barlow Tyrie for the quality of its benches. "They do last a long while!" says arboretum manager, Ian Chandler. "Barlow Tyrie benches fit into our location well, and it's important to select local companies to supply products, as we have our own environmental policy which puts, at its heart, sustainability."

Farmed teak furniture is the ideal seating option to mitigate the output of CO2 as well as act as a carbon trap. Trees cut down to make Barlow Tyrie furniture are replaced.

Ian continues, "We grow trees from around the world here at Marks Hall Estate. We want to ensure as many of our suppliers as possible share our values while offering visitors a nice place to sit, enjoy the scenery, and remember loved ones."

[markshall.org.uk](http://markshall.org.uk)  
Facebook: @markshallestate



## Refined Mallorca, Mallorca, Spain

### Inspiration

Background: Refined Mallorca, a property development portfolio team that promotes the 'real Mallorca', likes to do things on the small-but-perfectly-formed scale. Co-director and part-time viticulturist Klaus Heinemann explained that the business only takes on one very select property a year to renovate and then rents out to its discerning customers. "Our properties are in prime locations," Klaus tells Barlow Tyrie, "We have penthouse apartments in central Palma with stunning views of the cathedral as well as beautiful houses in the countryside." He went on to explain the business' background, "In around 2006, my business partner and I started developing properties in Amsterdam and discovered Barlow Tyrie furniture in the process. We then found there was an opportunity to develop in Spain, but on a larger scale. Now we spend more time here when the weather is good and don't have to deal with too much of the rain in Amsterdam!"

Solution: Refined Mallorca's Finca Son Fornes site sits on 50 acres of land and is located in a rural idyll far from the tourist-heavy crowds of Palma. Each property has its own private space, set far back from any roads. The team placed Barlow Tyrie furniture brought over from a previous Amsterdam roof terrace project which included Horizon sun loungers, dining tables and chairs. Klaus and his team were amazed to find that, with a little bit of cleaning effort, the chairs and loungers (now already over ten years old) were made to look like new again. This longevity has given Refined Mallorca confidence to not only complete their current rental portfolio with Napoli parasols and classic London benches but also acquire further Barlow Tyrie ranges for their third upcoming Finca Son Fornes residence due for completion in 2021.

[refinedmallorca.com](http://refinedmallorca.com)

Instagram: [@sonfornes\\_therealmallorca](https://www.instagram.com/sonfornes_therealmallorca)



# Equinox Dining

Stainless Steel

Equinox Dining

This extensive collection is divided into Dining, High Dining and Occasional furniture, offering a choice of table top material, stacking options and with easy to clean all-weather Textilene® fabrics. Powder-coated frames available.

Frame options ■ Graphite .01 ■ Arctic white .02 ■ Sling options ● Charcoal .500 ● Titanium .502 ● Platinum .504 ● Pearl .505 ● Seagull .512 ● Carbon .513



**Equinox Chair** £330  
1EQ W 51 H 85 D 61 cm  
Seat height 45cm  
Weight 8kg  
Stackable

**Additional products**

400907	Cover for 4 chairs stacked	£210
400908	Cover for 2 chairs stacked	£135



**Equinox Chair** £360  
1EQP W 51 H 85 D 61 cm  
Seat height 45cm  
Weight 8kg  
Stackable

**Additional products**

400907	Cover for 4 chairs stacked	£210
400908	Cover for 2 chairs stacked	£135



**Equinox Carver, Graphite Arm** £380  
1EQA.01 W 60 H 85 D 62 cm  
Seat height 44cm Arm height 64cm  
Weight 9kg  
Stackable

**Additional products**

400905	Cover for 4 chairs stacked	£215
400906	Cover for 2 chairs stacked	£165



**Equinox Carver, White Arm** £380  
1EQA.02 W 60 H 85 D 62 cm  
Seat height 44cm Arm height 64cm  
Weight 9kg  
Stackable

**Additional products**

400905	Cover for 4 chairs stacked	£215
400906	Cover for 2 chairs stacked	£165



**Equinox Carver** £395  
1EQPA W 60 H 85 D 61 cm  
Seat height 44cm Arm height 64cm  
Weight 9kg  
Stackable

**Additional products**

400905	Cover for 4 chairs stacked	£215
400906	Cover for 2 chairs stacked	£165



**Equinox Carver, Teak Arm** £380  
1EQA W 60 H 85 D 62 cm  
Seat height 44cm Arm height 64cm  
Weight 9kg  
Stackable

**Additional products**

400905	Cover for 4 chairs stacked	£215
400906	Cover for 2 chairs stacked	£165



\*Only available on powder-coated stainless steel

Sling options  
More information on page 188

## Equinox features

- Premium 316 'marine grade' stainless steel
- Textilene® fabric slings – strong, durable and mildew resistant
- Minimal maintenance – 4SSCG Stainless Steel Clean & Guard
- Stacking chairs and sun loungers
- Can be combined with the Mercury collection (see page 64)



### Equinox, Teak £440

1EQ.T W 51 H 85 D 61 cm  
Seat height 44cm  
Weight 8kg  
Stackable

Additional products		
800005	Cushion	£115
400907	Cover for 4 chairs stacked	£210
400908	Cover for 2 chairs stacked	£135

### Equinox Carver, Teak £480

1EQA.T W 60 H 85 D 62 cm  
Seat height 44cm Arm height 64cm  
Weight 9kg  
Stackable

Additional products		
800005	Cushion	£115
400905	Cover for 4 chairs stacked	£215
400906	Cover for 2 chairs stacked	£165



### Equinox Bench 135 £520

1EQ13.T L 135 W 44 H 43 cm  
Weight 16kg  
Assembly required



### Equinox Bistro Table 70 Ø £465

2EQC07.T Ø 67 H 70 cm  
Clearance 61cm  
Weight 11kg Seats 2  
Assembly required



### Equinox Bistro Table 100 Ø Circular with Teak top £910

2EQC10.T Ø 102 H 70 cm  
Clearance 67cm  
Weight 18kg Seats 4  
Assembly required Parasol hole

Additional products		
400751	Equinox cover	£525



### Equinox Table 100 Square with Teak top £850

2EQ10.T L 97 W 100 H 73 cm  
Clearance 65cm  
Weight 25kg Seats 4  
Assembly required Parasol hole

Additional products		
400751	Equinox cover	£495



### Equinox Table 150 Rectangular with Teak top £1075

2EQ15.T L 149 W 100 H 73 cm  
Clearance 65cm  
Weight 30kg Seats 6  
Assembly required Parasol hole

Additional products		
400765	Equinox cover	£510



### Equinox Table 220 Rectangular with Teak top £1400

2EQ22.T L 217 W 100 H 73 cm  
Clearance 65cm  
Weight 42kg Seats 8 to 10  
Assembly required Parasol hole

Additional products		
400766	Equinox cover	£575

### Equinox Extending Table 230 Rectangular with Teak top £2000

2EQX23 L 151–228 W 100 H 74 cm  
Clearance 65cm  
Weight 46kg Seats 6 to 8  
Assembly required Parasol hole

Additional products		
400765	Equinox cover	£510





Equinox Extending Table 230 and Mercury Dining Armchairs

**Equinox Table 150 Ø**  
Circular with Teak top £1775

2EQC15S.T    Ø 147 H 70 cm  
Clearance 67cm  
Weight 46kg    Seats 6  
Assembly required    Parasol hole

**Additional products**  
400753    Equinox cover    £565



**Equinox Table 180 Ø**  
Circular with Teak top £2250

2EQC18S.T    Ø 180 H 70 cm  
Clearance 67cm  
Weight 65kg    Seats 8  
Assembly required    Parasol hole

**Additional products**  
400754    Equinox cover    £620



**Equinox Lazy Susan 70 Ø**  
Circular for 2EQC15S.T £365

2EQLS07.T    Ø 67  
Weight 6kg  
Parasol hole



**Equinox Lazy Susan 100 Ø**  
Circular for 2EQC18S.T £635

2EQLS10.T    Ø 102  
Weight 13kg  
Parasol hole



**Equinox Serving Table Rectangular with Teak top and shelf** £950

2EQS.T    L 114 W 59 H 85 cm  
Weight 30kg  
Assembly required

**Additional products**  
400770    Equinox cover    £220

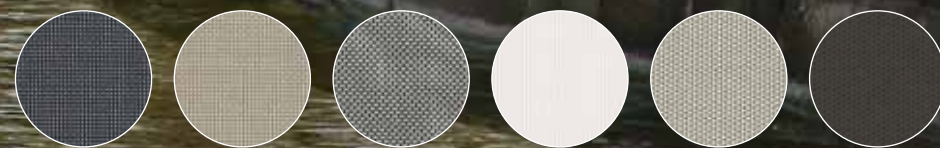
# Equinox High Dining

Stainless Steel

Equinox High Dining

This extensive collection is divided into Dining, High Dining and Occasional furniture, offering a choice of table top material, stacking options and with easy to clean all-weather Textilene® fabrics.

Sling options  
More information on page 188



Charcoal Titanium Platinum Pearl Seagull\* Carbon\*

\*Only available on powder-coated stainless steel

Frame options ■ Graphite .01 ■ Arctic white .02 ■ Sling options ● Titanium .502 ● Charcoal .500 ● Platinum .504 ● Pearl .505 ● Seagull .512 ● Carbon .513



**Equinox High Dining Chair** £355

1EQH W 47 H 106 D 52 cm  
Seat height 73cm  
Weight 8kg  
Stackable



**Equinox High Dining Chair** £385

1EQPH W 47 H 106 D 52 cm  
Seat height 73cm  
Weight 8kg  
Stackable



**Equinox High Dining Chair, Teak** £375

1EQH.T W 47 H 106 D 51 cm  
Seat height 72cm  
Weight 8kg  
Stackable



**Equinox High Dining Carver** £400

1EQHC W 56 H 106 D 52 cm  
Seat height 73cm Arm height 92cm  
Weight 10kg  
Stackable



**Equinox High Dining Carver** £460

1EQPHC W 56 H 106 D 52 cm  
Seat height 73cm Arm height 92cm  
Weight 10kg  
Stackable



**Equinox High Dining Carver, Teak** £430

1EQHC.T W 56 H 106 D 51 cm  
Seat height 72cm Arm height 92cm  
Weight 10kg  
Stackable



**Equinox High Dining Stool with Teak Seat**

£285

1EQHS.T W 41 H 72 D 48 cm  
Weight 8kg



**Equinox High Dining Bistro Table 70 Ø Circular with Teak top**

£490

2EQCH07.T Ø 67 H 99 cm  
Clearance 96cm  
Weight 10kg Seats 2  
Assembly required Parasol hole



**Equinox High Dining Bistro Table 100 Ø Circular with Teak top**

£940

2EQCH10.T Ø 102 H 99 cm  
Clearance 96cm  
Weight 20kg Seats 4  
Assembly required Parasol hole



**Equinox High Dining Pedestal Table 70 Square**

£755

2EQPH07 L 70 W 70 H 99 cm  
Clearance 96cm  
Weight 16kg Seats 2  
Assembly required

**Additional products**

400752 Equinox High Dining cover £405



Frame options ■ Graphite .01 ■ Arctic white .02 ■ Ceramic options ● Frost .806 ● Dusk .808

Equinox Dining Stool HD with teak seat







**Equinox Ottoman** £700

1EQDO.+ W 74 H 45 D 71 cm  
Weight 10kg

**Optional**  
.V Water repellent fabric +£42

**Additional products**  
400130 Equinox cover £195



**Equinox Ottoman** £825

1EQPDO W 74 H 45 D 71 cm  
Weight 10kg

**Optional**  
.V Water repellent fabric +£42

**Additional products**  
400130 Equinox cover £195



**Equinox Low Table 44 Square with Teak top** £270

2EQL04.T L 44 W 44 H 40 cm  
Weight 9kg  
Assembly required



**Equinox Low Table 60 Square with Teak top** £350

2EQL06.T L 59 W 59 H 40 cm  
Weight 11kg  
Assembly required



**Equinox Low Table 100 Square with Teak top** £805

2EQSC10.T L 97 W 100 H 48 cm  
Weight 22kg  
Assembly required

**Additional products**  
400782 Equinox cover £170



**Equinox Low Table 100 Rectangular with Teak top** £460

2EQL10.T L 101 W 59 H 40 cm  
Weight 15kg  
Assembly required

**Additional products**  
400783 Equinox cover £140



**Equinox Conversation Table 100 Ø Circular with Teak top** £940

2EQCC10.T Ø 102 H 48 cm  
Weight 20kg  
Assembly required Parasol hole

**Additional products**  
400781 Equinox cover £170



**Equinox Low Table 50 Square** £345

2EQPL05 L 50 W 50 H 40 cm  
Weight 10.5kg  
Assembly required



**Equinox Low Table 100 Rectangular** £560

2EQPL10 L 100 W 50 H 40 cm  
Weight 25kg  
Assembly required

**Additional products**  
400783 Equinox cover £140



Frame options ■ Graphite .01 ■ Arctic white .02 ■ Ceramic options ● Frost .806 ● Dusk .808



Equinox Deep Seating Armchairs and Ottomans with powder-coated finish



**Layout Corner Seat** £2251

1LYMCR L 90 W 90 H 72 cm  
Weight 29kg  
Water repellent fabric

**Additional products**  
400123 Layout cover £215



**Layout Double Corner Seat** £3430

1LYMCR2 L 173 W 90 H 72 cm  
Weight 54kg  
Water repellent fabric

**Additional products**  
400124 Layout cover £250



**Layout Double Corner Seat + Low Arm** £3870

1LYMCR2E L 179 W 90 H 72 cm  
Weight 60kg  
Water repellent fabric

**Additional products**  
400124 Layout cover £250



**Layout Double Corner Seat + High Arm** £3945

1LYMCR2EH L 179 W 90 H 72 cm  
Weight 40kg  
Water repellent fabric

**Additional products**  
400124 Layout cover £250



**Layout Bridging Table 80 Square with Teak top** £550

2LYB08 L 88 W 82 H 10 cm  
Weight 12kg  
Assembly required



**Layout Side Table 40 Ø Circular with Teak top** £330

2LYSC04 L 40 W 55 H 55 cm  
Weight 6kg  
Assembly required



**Layout Narrow Low Table 80 Rectangular with Teak top** £410

2LYLN08 L 82 W 40 H 29 cm  
Weight 8kg  
Assembly required



**Layout Low Table 80 Square with Teak top** £645

2LYL08 L 82 W 82 H 29 cm  
Weight 14kg  
Assembly required

**Additional products**  
400120 Layout Deep Seating cover £165



**Layout Low Table 160 Rectangular with Teak top** £1100

2LYL16 L 165 W 82 H 29 cm  
Weight 24.5kg  
Assembly required

**Additional products**  
400121 Layout Deep Seating cover £260



**Layout Narrow Low Table 160 Rectangular with Teak top** £710

2LYLN16 L 165 W 40 H 29 cm  
Weight 15kg  
Assembly required

**Additional products**  
400122 Layout Deep Seating cover £260



**Layout Side Table 80 Rectangular with Teak top** £375

2LYSN08 L 82 W 53 H 52 cm  
Weight 7kg  
Assembly required



**Layout Narrow Console Table 160** £825

2LYN16 L 165 W 40 H 65 cm  
Weight 24kg



Layout 80 Side Table Circular with teak top and Arctic White frame

Frame options ■ Arctic white .02 ■ Forge grey .14

# Layout Dining



Layout 260 Dining Table with Arctic White frame and teak top

Stainless Steel

Layout Dining



**Layout Stacking Armchair** £480

1LYAS W 60 H 80 D 53 cm  
Seat height 46cm Arm height 67cm  
Weight 8kg  
Stackable



**Layout 130 Bench** £555

1LY13 W 126 H 44 D 38 cm  
Weight 13kg



**Layout 200 Bench** £750

1LY20 W 188 H 44 D 38 cm  
Weight 16kg



**Layout Table 200** £1575

2LY20 L 195 W 100 H 74 cm  
Clearance 63cm  
Weight 39kg Seats 8  
Assembly required



**Layout Table 260** £1900

2LY26 L 257 W 100 H 74 cm  
Clearance 63cm  
Weight 48kg Seats 8  
Assembly required



**Additional products**  
400766 Layout cover £575



Frame options ■ Arctic white .02 ■ Forge grey .14



Layout Stacking Armchair,  
Arctic white frame



Layout 130 Bench,  
Forge Grey frame and teak top



Layout Stacking Armchair,  
Forge Grey frame



Layout 200 Dining Table, Layout Stacking Armchairs  
and Layout 130 bench. Arctic White frames

# Ascot



Ascot Highback Recliner Chairs and Arundel  
Extending Table 285

Teak

Ascot

The Ascot is a traditional and elegant collection of folding furniture with a pleasing simplicity of design that make it ideal for combining with many of our other ranges.



**Ascot Chair** £405  
1AS W 48 H 95 D 62 cm  
Seat height 43cm  
Weight 7kg  
Folding

Additional products	
800004	Ascot cushion £95
	Water repellent cushion £109



**Ascot Carver** £490  
1ASC W 58 H 95 D 61 cm  
Seat height 43cm Arm height 66cm  
Weight 8kg  
Folding

Additional products	
800004	Ascot cushion £95
	Water repellent cushion £109



**Ascot Highback Recliner Chair** £775  
1ASR W 60 H 114 D 64 cm  
Seat height 43cm Arm height 64cm  
Weight 13kg  
Folding

Additional products	
800002	Ascot Highback Recliner cushion £225
	Water repellent recliner cushion £259



**Ascot Clip-on Tray For Recliner 1ASR** £45  
1RET L 32 W 20  
Weight 1kg



**Ascot Table 110 Ø Circular** £750  
2AS11 Ø 109 H 70 cm  
Clearance 68cm  
Weight 14kg Seats 4 to 6  
Folding Parasol hole



**Ascot Footstool / Side table** £255  
1REFS W 43 H 42 D 42 cm  
Weight 5kg  
Folding

# Bermuda



Bermuda High Dining Table 90 and Bermuda High Dining Chair

Teak

Bermuda

Perfect for the garden or the pool side, the Bermuda chair and table come in standard and high dining options.



**Bermuda Chair**

£375

1BE W 46 H 83 D 52 cm  
Weight 8kg  
Assembly required



**Bermuda High Dining Chair**

£450

1BEH W 46 H 107 D 53 cm  
Seat height 73cm  
Weight 10kg  
Assembly required



**Bermuda Pedestal Table  
90 Ø Circular**

£810

2BEC09 Ø 90 H 74 cm  
Clearance 71cm  
Weight 15kg  
Assembly required Parasol hole

**Additional products**

400751 Bermuda cover £525



**Bermuda High Dining Table  
90 Ø Circular**

£855

2BECH09 Ø 90 H 99 cm  
Clearance 95cm  
Weight 17kg Seats 2  
Assembly required Parasol hole

**Additional products**

400752 Bermuda cover £405

# Chesapeake

Teak

Chesapeake

Chesapeake marries tradition with innovation. Elements include rolled armrests on chairs and curved sides to dining tables.



**Chesapeake Chair** £360

1CP W 46 H 92 D 63 cm  
Seat height 44cm  
Weight 7kg  
Assembly required

**Additional products**  
800003 Chesapeake Chair cushion £100



**Chesapeake Carver** £495

1CPA W 62 H 92 D 64 cm  
Seat height 44cm Arm height 66.1cm  
Weight 9kg  
Assembly required

**Additional products**  
800003 Chesapeake Chair cushion £100



**Chesapeake Table 120** £1075

2CPC12 Ø 115 H 74 cm  
Clearance 70.7cm  
Weight 23kg Seats 4 to 6



**Chesapeake Table 280** £1795

2CP28 L 280 W 116 H 74 cm  
Clearance 63.5cm  
Weight 48kg Seats 10

# Drummond



Drummond Table 185 Circular with Horizon Armchairs

Teak

Drummond

The Drummond collection comprises two large circular dining tables with heavy table tops and impressive turned legs.



**Drummond Table 150 Ø Circular** £1950

2DR15 Ø 150 H 70 cm  
Clearance 61cm  
Weight 47kg Seats 6  
Assembly required Parasol hole

**Additional products**  
400753 Drummond cover £565



**Drummond Table 185 Ø Circular** £2550

2DR18 Ø 185 H 70 cm  
Clearance 61cm  
Weight 51kg Seats 8  
Assembly required Parasol hole

**Additional products**  
400754 Drummond cover £620



**Lazy Susan 75** £325

2LS07 Ø 74cm  
Weight 7kg



**Lazy Susan 110** £530

2LS11 Ø 109cm  
Weight 14kg



# Linear



Linear Carver

Teak

Linear

Simple yet beautiful. Perfect for the club. Architectural qualities in the deep seating are echoed in the fine lines of Linear dining tables. Emphasised mitred corners and finger joints add detail to the collection.



<b>Linear Carver</b>		£395
1LIA	W 58 H 91 cm D 61 cm Seat height 44cm Arm height 66cm Weight 9kg Assembly required	
<b>Additional products</b>		
800087	Linear Carver cushion	£175
	Water repellent Carver cushion	£201



<b>Linear Bench 135</b>		£520
1L13	L 135 W 40 H 43 cm Weight 13kg Assembly required	
<b>Additional products</b>		
800077	Linear Bench 135 cushion	£245
	Water repellent Bench 135 cushion	£282



<b>Linear Bench 150</b>		£570
1L15	L 155 W 40 H 43 cm Weight 14kg Assembly required	
<b>Additional products</b>		
800078	Linear Bench 150 cushion	£265
	Water repellent Bench 150 cushion	£305



<b>Linear Armchair</b>		£1200
1LIDA.+	W 97 H 74 D 89 cm Seat height 40cm Arm height 60cm Weight 18kg	
<b>Optional</b>		
.V	Water repellent fabric	+£66
<b>Additional products</b>		
410901	Linear cover	£255



<b>Linear Two-seater Settee</b>		£2055
1LID2.+	L 181 H 74 D 89 cm Seat height 40cm Arm height 60cm Weight 27kg	
<b>Optional</b>		
.V	Water repellent fabric	+£132
<b>Additional products</b>		
410902	Linear cover	£375



<b>Linear Three-seater Settee</b>		£3045
1LID3.+	L 264 H 74 D 89 cm Seat height 40cm Arm height 60cm Weight 42kg	
<b>Optional</b>		
.V	Water repellent fabric	+£198
<b>Additional products</b>		
410903	Linear cover	£375



**Linear Ottoman** £765

1LIDO.+ W 84 H 40 D 84 cm  
Weight 11kg

**Optional**  
.V Water repellent fabric +£48

**Additional products**  
410908 Linear cover £195



**Linear Table 90 Square** £690

2LI09 L 89 W 89 H 75 cm  
Clearance 67cm  
Weight 20kg Seats 4  
Assembly required Parasol hole

**Additional products**  
400751 Linear cover £525



**Linear Table 150 Rectangular** £895

2LI15 L 150 W 89 H 75 cm  
Clearance 67cm  
Weight 25kg Seats 6  
Assembly required Parasol hole

**Additional products**  
400765 Linear cover £510



**Linear Table 200 Rectangular** £1600

2LI20 L 200 W 96 H 75 cm  
Clearance 67cm  
Weight 40kg Seats 6-8  
Assembly required Parasol hole

**Additional products**  
400766 Linear cover £575



**Linear Extending Table 230 Rectangular** £2550

2LIX23 L 155-232 W 109 H 76 cm  
Clearance 67cm  
Weight 70kg Seats 6-8  
Assembly required Parasol hole

**Additional products**  
400765 Linear cover £510



**Linear Side Table 76 Square** £455

2LIS07 L 76 W 76 H 51 cm  
Weight 13kg  
Assembly required

**Additional products**  
410905 Linear cover £195



**Linear Low Table 76 Square** £425

2LIL07 L 76 W 76 H 40 cm  
Weight 11kg  
Assembly required

**Additional products**  
410904 Linear cover £195



**Linear Low Table 120 Rectangular** £490

2LIL12 L 119 W 64 H 40 cm  
Weight 15kg  
Assembly required

**Additional products**  
410906 Linear cover £255



**Linear Low Table 150 Rectangular** £655

2LIL15 L 150 W 76 H 40 cm  
Weight 19kg  
Assembly required

**Additional products**  
410907 Linear cover £295



Linear Deep Seating Two-Seater Settee



**Monaco Table  
150 Rectangular** £960

2MO15 L 150 W 90 H 71 cm  
Clearance 61cm  
Weight 23kg Seats 6  
Assembly required Parasol hole

**Additional products**  
400765 Monaco table cover £510



**Monaco Extending Table  
240 Rectangular** £1425

2MOX24 L 175-240 W 90 H 71 cm  
Clearance 61cm  
Weight 36kg Seats 8  
Assembly required Parasol hole



**Monaco Low Table 44 Square** £175

2MOL04 L 44 W 44 H 40 cm  
Weight 5kg  
Assembly required



**Monaco Low Table 60 Square** £315

2MOL06 L 59 W 59 H 40 cm  
Weight 9kg  
Assembly required



**Monaco Low Table 100 Rectangular** £420

2MOL10 L 101 W 59 H 40 cm  
Weight 12kg  
Assembly required

**Additional products**  
400783 Monaco cover £140



Monaco Armchair



**Monterey Deep Seating Three-seater Settee** £2400

1MTD3 L 194 H 82 D 81 cm  
 Seat height 43cm Arm height 63cm  
 Weight 31kg  
 Assembly required

Additional products		
800097	Monterey Three-seater cushion	£770
	Water repellent cushion	£886
400110	Monterey cover	£425



**Monterey Deep Seating Three-seater Settee** £2400

1MTD3.T L 194 H 82 D 81 cm  
 Seat height 43cm Arm height 63cm  
 Weight 43kg  
 Assembly required

Additional products		
800097	Monterey Three-seater cushion	£770
	Water repellent cushion	£886
400110	Monterey cover	£425



**Monterey Table 300** £2995

2MT30 L 300 W 100 H 74 cm  
 Clearance 67cm  
 Weight 81kg Seats 10  
 Assembly required

Additional products		
400771	Monterey table cover	£330



**Monterey Table 200 Rectangular** £1995

2MT20 L 200 W 100 H 74 cm  
 Clearance 67cm  
 Weight 54kg Seats 6  
 Assembly required

Additional products		
400766	Monterey table cover	£575



**Monterey Table 100 Square** £1295

2MT10 L 100 W 100 H 74 cm  
 Clearance 67cm  
 Weight 39kg Seats 4  
 Assembly required

Additional products		
400751	Monterey table cover	£525



**Monterey Low Table 150 Rectangular** £740

2MTL15 L 150 W 50 H 45 cm  
 Weight 23kg  
 Assembly required

Additional products		
400765	Monterey cover	£510



**Monterey Side Table 50 Square** £430

2MTS05 L 50 W 50 H 55 cm  
 Weight 10kg  
 Assembly required

Additional products		
400765	Monterey cover	£510



From top left: Monterey Deep Seating Armchair, Monterey Low Table 150 Rectangular, Monterey Deep Seating Three-Seater Settee, Monterey armchair with Chalk cord and Monterey Table 200 Rectangular with Oxide top



Ceramic options ● Oxide .805 ● Frost .806 ● Brown .400 ● Chalk .401

# Storage



Ideal for protecting cushions and other garden accessories. The chest is ventilated under the lid and has a brass lock for security. The chest bottom prevents the ingress of insects. Opening and closing of the chest lid is made easy with gas struts.



**Storage Chest 150** £3400

3SC15    L 157 W 84 H 72 cm  
 Weight 70kg    Capacity 625 litres  
 Assembly required

**Additional products**

400773	Storage cover	£235
--------	---------------	------

# Woodland



Stock fabric options  
Special order colours available (see p.184)



Martinique Textilene    Ebony Jaquatex    Ivory Jaquatex

The Woodland screens create greater intimacy and enclosure for your seating or lounging areas. An optional removable curtain completes the feeling of seclusion.

**Woodland Screen Portrait** £1125

3WS12    W 122 H 178 cm  
Weight 41kg  
Assembly required  
Discreet lighting included

**Optional**  
3WSC12    Screen curtain    £195



**Woodland Screen Landscape** £1580

3WS23    W 228 H 133 cm  
Weight 46kg  
Assembly required  
Discreet lighting included

**Optional**  
3WSC28    Screen curtain    £270





## Rustic Teak

# Titan



Titan 240 Table, Titan Armchairs with optional cushions, and Titan 200 Bench

Rustic Teak

Titan

Make a stunning visual statement. Are you a chair person? Or perhaps prefer a bench? Keep your drinks cool and even prepare food on the serving table. BBQ anyone?



**Titan Armchair** £345

1TIA.08 W 61 H 86 D 63 cm  
Seat height 46cm Arm height 67cm  
Weight 9kg  
Stackable

Additional products		
800084	Titan Armchair cushion	£100
	Water repellent Armchair cushion	£115
400212	Titan cover (2 chairs)	£245
400213	Titan cover (3 chairs)	£250
400214	Titan cover (4 chairs)	£255



**Titan Bench 130** £625

1T113 L 130 W 41 H 44 cm  
Weight 29kg  
Assembly required

Additional products		
800088	Titan Bench 130 cushion	£235
	Water repellent Bench 130 cushion	£250



**Titan Bench 200** £790

1T120 L 200 H 44 D 41 cm  
Weight 36kg  
Assembly required

Additional products		
800085	Titan Bench 200 cushion	£355
	Water repellent Bench 200 cushion	£408



**Titan Bench 260** £970

1T126 L 260 H 44 D 41 cm  
Weight 41kg  
Assembly required

Additional products		
800086	Titan Bench 260 cushion	£465
	Water repellent Bench 260 cushion	£535



**Titan High Dining Chair** £640

1TIH.08 W 45 H 109 D 50 cm  
Weight 24kg  
Assembly required Swivel





**Titan Table 100 Square** £1175

2TI10 L 99 W 99 H 75 cm  
Clearance 61cm  
Weight 57kg Seats 4  
Assembly required

**Additional products**  
400751 Titan table cover £525



**Titan Table 180 Rectangular** £1700

2TI18 L 180 W 99 H 75 cm  
Clearance 61cm  
Weight 76kg  
Assembly required

**Additional products**  
400766 Titan table cover £575



**Titan Table 240 Rectangular** £1975

2TI24 L 240 W 99 H 75 cm  
Clearance 61cm  
Weight 95kg Seats 6-8  
Assembly required

**Additional products**  
400769 Titan cover £265



**Titan Table 300 Rectangular** £2450

2TI30 L 300 W 99 H 75 cm  
Clearance 61cm  
Weight 111kg Seats 8-10  
Assembly required

**Additional products**  
400771 Titan cover £330



**Titan High Dining Table 75 Square** £910

2TIH07.08 L 75 W 75 H 105 cm  
Clearance 100cm  
Weight 20kg  
Assembly required



**Titan Serving Table 136 Rectangular** £2450

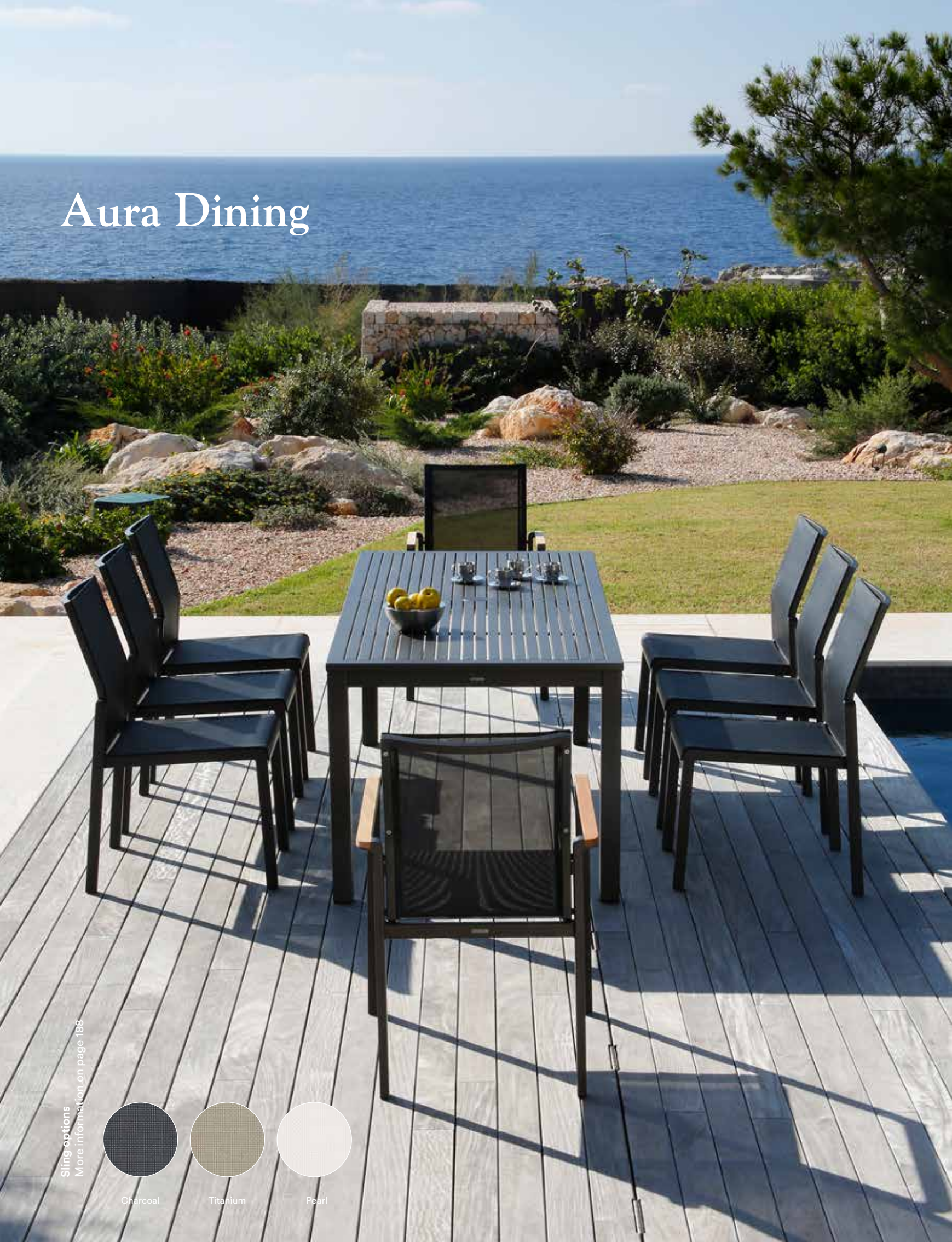
2TIS.08 L 136-179 W 61 H 94 cm  
Weight 74kg  
Assembly required

**Additional products**  
400924 Titan cover £230

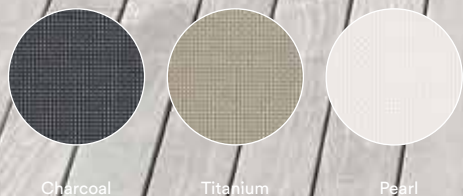


Titan Armchairs are stackable

# Aura Dining



Sling options  
More information on page 188



Charcoal

Titanium

Pearl

Aluminium

Aura Dining

Aura is a modern, elegant, lightweight collection combining powder coated aluminium frames, teak table tops with aluminium inlay plus stackable sun loungers and armchairs accented with teak armrests.



**Aura Chair** £195

1AU W 50 H 91 D 66 cm  
Seat height 45cm  
Weight 4kg  
Stackable



**Aura Armchair**

£250

1AUA W 58 H 91 D 66 cm  
Seat height 45cm Arm height 65cm  
Weight 7kg  
Stackable

**Additional products**

400902 Aura cover (2 chairs) £165  
400901 Aura cover (4 chairs) £195



**Aura Table 90 Square**

£680

2AUA09 L 90 W 90 H 74 cm  
Clearance 67cm Seats 4  
Weight 18kg  
Assembly required

**Additional products**

400751 Aura table cover £525



**Aura Table 150 Rectangular**

£875

2AUA15 L 145 W 90 H 74 cm  
Clearance 67cm Seats 6  
Weight 23kg  
Assembly required

**Additional products**

400765 Aura table cover £510



**Aura Table 200**

£1175

2AUA20 L 200 W 90 H 74 cm  
Clearance 67cm Seats 8  
Weight 26kg  
Assembly required

**Additional products**

400766 Aura table cover £575



Frame options ■ Graphite .01 ■ Arctic white .02 ■ Champagne .04 ■ Sling options ● Titanium .502 ● Pearl .505 ● Charcoal .500 ●



Aura Dining Chair and Aura Narrow Dining Table 140



**Aura Narrow Dining Aluminium Narrow Table 140 Rectangular** £785

2AUAN14 L 139 W 71 H 74 cm  
Clearance 67cm  
Weight 21kg Seats 4  
Assembly required Parasol hole

**Additional products**  
400920 Aura Narrow Dining cover £340



**Aura Narrow Dining Aluminium Narrow Table 200 Rectangular** £995

2AUAN20 L 200 W 71 H 74 cm  
Clearance 67cm  
Weight 24kg Seats 6 to 8  
Assembly required Parasol hole



**Aura Narrow Dining Narrow Table 140 Rectangular** £785

2AUN14 L 139 W 71 H 74 cm  
Clearance 67cm  
Weight 17kg Seats 4  
Assembly required Parasol hole

**Additional products**  
400920 Aura Narrow Dining cover £340



**Aura Narrow Dining Narrow Table 200 Rectangular** £995

2AUN20 L 200 W 71 H 74 cm  
Clearance 67cm  
Weight 23kg Seats 6 to 8  
Assembly required Parasol hole

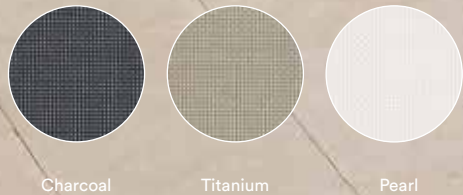


Frame options ■ Graphite .01 ■ Arctic white .02 ■ Champagne .04

# Aura High Dining



Sling options  
More information on page 188



Charcoal Titanium Pearl

Frame options ■ Graphite .01 ■ Arctic white .02 ■ Champagne .04 ■ Sling options ● Titanium .502 ● Pearl .505 ● Charcoal .500

This range of beautiful aluminium high dining furniture is light in weight that makes it a pleasure to use. The range features seats and tables with tops in teak and aluminium.



**Aura High Dining Carver** £365  
1AUHC W 58 H 119 D 61 cm  
Seat height 77cm Arm height 96cm  
Weight 6kg  
Assembly required



**Aura High Dining Aluminium Table 140 Rectangular** £995  
2AUAH14 L 139 W 71 H 105 cm  
Clearance 98cm  
Weight 24kg Seats 4  
Assembly required Parasol hole

**Additional products**  
400917 Aura table cover £360  
400909 Aura table & chairs cover £380



**Aura High Dining Aluminium Table 200 Rectangular** £1350  
2AUAH20 L 200 W 71 H 105 cm  
Clearance 98cm  
Weight 28kg Seats 6  
Assembly required Parasol hole

**Additional products**  
400919 Aura High Dining cover £360



**Aura High Dining Table 140 Rectangular** £970  
2AUH14 L 139 W 71 H 105 cm  
Clearance 98cm  
Weight 24kg Seats 4  
Assembly required

**Additional products**  
400917 Aura table cover £360  
400909 Aura table & chairs cover £380



**Aura High Dining Table 200 Rectangular** £1225  
2AUH20 L 200 W 71 H 105 cm  
Clearance 98cm  
Weight 31kg Seats 6  
Assembly required Parasol hole

**Additional products**  
400919 Aura High Dining cover £360



# Napoli



Napoli Parasol 2.8 with tilting action

The eucalyptus poles and struts are accented with either nickel-plated, solid brass or aluminium and stainless steel fittings, for a first class finish. A very durable matte finish urethane is applied to all wood surfaces. Engineered with tilting, pivoting or telescopic mechanisms.



**Napoli Parasol 2.8 Mtr -  
Circular Ø38mm pole**

£825

4NA28C.302 Ø 281 H 249 cm  
Weight 10kg  
Includes storage cover



**Napoli Parasol 3 Mtr -  
Square Ø61mm pole**

£1475

4NA30S.302 W 300 H 269 D 300 cm  
Weight 22kg  
Includes storage cover



**Napoli Parasol 3.5 Mtr -  
Circular Ø61mm pole**

£1275

4NA35C.302 Ø 350 H 269 cm  
Weight 21.5kg  
Includes storage cover



**Napoli Parasol 3.5 X 2.5 Mtr  
Rectangular - Ø61mm pole**

£1450

4NA35R.302 L 355 W 254 H 270 cm  
Weight 22kg  
Includes storage cover



**Napoli Parasol 4 Mtr -  
Circular Ø 61mm pole**

£1475

4NA40C.302 Ø 403 H 270 cm  
Weight 22kg  
Includes storage cover



**Napoli Cantilever Parasol 3.5 Mtr Square** £3600  
 4NAC35S.302 L 350 W 350 H 307 cm  
 Clearance 230cm  
 Weight 54kg  
 Assembly required  
 Includes storage cover



**Napoli Cantilever Parasol 4 Mtr Square** £3800  
 4NAC40S.302 L 400 W 400 H 315 cm  
 Clearance 230cm  
 Weight 64kg  
 Assembly required  
 Includes storage cover

## Bases & Accessories



**Parasol Standard Base 61 - Large** £295  
 4PBL L 60 W 60 H 44 cm  
 Weight 29kg  
 Assembly required



**Parasol Standard Base 61 - Large High Dining** £310  
 4PBLH L 60 W 60 H 75 cm  
 Weight 30kg  
 Assembly required



**Parasol Standard Base 48 - Medium** £292  
 4PBM L 60 W 60 H 44 cm  
 Weight 24kg  
 Assembly required



**Parasol Standard Base 38 - Small** £290  
 4PBS L 60 W 60 H 41 cm  
 Weight 23kg  
 Assembly required



**Parasol Freestanding Base 61 - Large** £490  
 4PBFL L 74 W 74 H 44 cm  
 Weight 47kg  
 Assembly required



**Parasol Freestanding Base 61 Large High Dining** £505  
 4PBFLH L 74 W 74 H 75 cm  
 Weight 48kg  
 Assembly required



**Parasol Freestanding Base 48 Medium** £487  
 4PBFM L 74 W 74 H 44 cm  
 Weight 46kg  
 Assembly required



**Parasol Freestanding Base 48 Medium High Dining** £500  
 4PBFMH L 74 W 74 H 75 cm  
 Weight 47kg  
 Assembly required



**Parasol Freestanding Base 38 Small** £485  
 4PBFS L 74 W 74 H 41 cm  
 Weight 45kg  
 Assembly required



**Parasol Floor Fixing Base 61 Large** £120  
 4PBFFL L 30 W 30 H 44 cm  
 Weight 8kg  
 Assembly required



**Parasol Floor Fixing Base 61 Large High Dining** £135  
 4PBFFLH L 30 W 30 H 75 cm  
 Weight 9kg  
 Assembly required



**Parasol Floor Fixing Base 48 Medium** £117  
 4PBFFM L 30 W 30 H 44 cm  
 Weight 8kg  
 Assembly required



**Parasol Floor Fixing Base 48 Medium High Dining** £130  
 4PBFFMH L 30 W 30 H 75 cm  
 Weight 9kg  
 Assembly required



**Parasol Floor Fixing Base 38 Small** £115  
 4PBFFS L 30 W 30 H 42 cm  
 Weight 7kg  
 Assembly required



**Sail Sunshade Floor Fixing Base** £125  
 4PBFFSS L 30 W 30 H 31 cm  
 Weight 8kg  
 Assembly required



**Parasol In-ground Base 61 Large** £105  
 4PBUL L 10 W 10 H 89 D 47 cm  
 Weight 6kg  
 Assembly required



**Parasol In-ground Base 61 Large High Dining** £120  
 4PBULH L 10 W 10 H 121 D 47 cm  
 Weight 7kg  
 Assembly required



**Parasol In-ground Base 48 - Medium** £102  
 4PBUM L 10 W 10 H 88 D 47 cm  
 Weight 5kg  
 Assembly required



**Parasol In-ground Base 48 - Medium High Dining** £115  
 4PBUMH L 10 W 10 H 121 cm  
 Weight 6kg  
 Assembly required



**Parasol In-ground Base 38 - Small** £100  
 4PBUS L 10 W 10 H 87 D 47 cm  
 Weight 5kg  
 Assembly required



**Sail Sunshade In-ground Base** £110  
 4PBUSS L 10 W 10 H 77 D 47 cm  
 Weight 6kg  
 Assembly required



**Napoli Cantilever Parasol Freestanding Base** £940  
 4PBFC.04 W 97 H 8 D 97 cm  
 Weight 38kg  
 Assembly required  
 Includes rubber mat

Weighted paving stones not included. Please contact [uksales@teak.com](mailto:uksales@teak.com) for more information.



**Napoli Cantilever Parasol In-ground Base** £250  
 4PBUC.04 L 66 cm  
 Weight 11kg  
 Assembly required



**Parasol Pedestal Base 59 - Large** £225  
 4PBPL Ø 59  
 Weight 22kg



**Parasol Pedestal Base 39 - Small** £125  
 4PBPS Ø 39  
 Weight 11kg

## Caps & Rings



**Table Blanking Cap - Brass** £37  
 4PR.00 Ø 8cm D 0.8cm  
 Weight 0.25kg



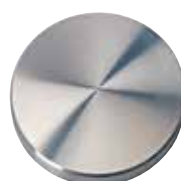
**Table Reducer Ring - Brass** £37  
 4PR.38 Ø 8cm D 0.8cm  
 Weight 0.15kg



**Table Reducer Ring - Brass** £37  
 4PR.48 Ø 8cm D 0.8cm  
 Weight 0.15kg



**Table Reducer Ring - Brass** £37  
 4PR.61 Ø 8cm D 0.8cm  
 Weight 0.1kg



**Table Blanking Cap - Stainless Steel** £35  
 4PRSS.00 Ø 8cm D 0.8cm  
 Weight 0.25kg - 0.55lbs



**Table Reducer Ring - Stainless Steel** £35  
 4PRSS.38 Ø 8cm D 0.8cm  
 Weight 0.15kg - 0.33lbs



**Table Reducer Ring - Stainless Steel** £35  
 4PRSS.48 Ø 8cm D 0.8cm  
 Weight 0.15kg



**Table Reducer Ring - Stainless Steel** £35  
 4PRSS.61 Ø 8cm D 0.8cm  
 Weight 0.1kg

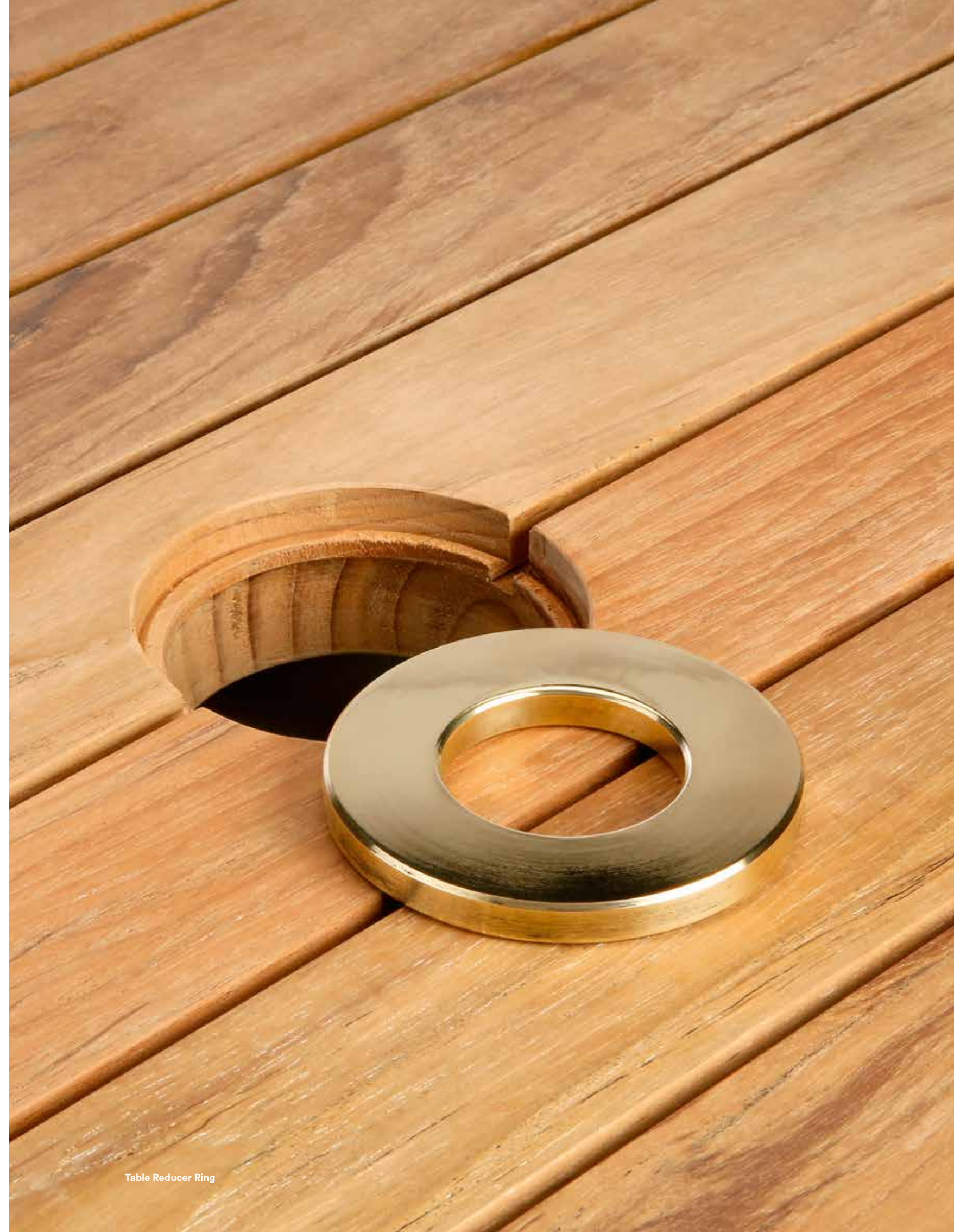


Table Reducer Ring





## Heritage

14 Collections 7 international design awards

# Arundel

Based on one of Barlow Tyrie's original designs from the 1920s, this classic offers an extending dining table that seats upto 10 people.



**Arundel Extending Table  
285 Rectangular** £3100

2ARX28 L 204–286 W 110 H 70 cm  
Clearance 58cm  
Weight 75kg Seats 8 to 10  
Assembly required Parasol hole

**Additional products**  
400766 Arundel table cover £575

# Colchester

The Colchester coffee and side tables are from our heritage collection and offer a sturdy quality.



**Colchester Side Table 54 Square** £310

2COH L 55 W 55 H 54 cm  
Weight 9kg  
Assembly required



**Colchester Low Table 54 Square** £290

2COL L 55 W 55 H 40 cm  
Weight 8kg  
Assembly required

# Commodore

This classic steamer chair is inspired by the golden age of the transatlantic liner.



**Commodore Steamer** £1275

1CO	L 146 W 63 H 100 cm Seat height 36cm Arm height 59cm Weight 18kg Folding
-----	---

**Additional products**

800066	Commodore Steamer cushion	£340
	Water repellent cushion	£391

# Felsted

Timeless design and solid construction make the Felsted collection suitable for use in public spaces as well as private gardens.



**Felsted Armchair** £485

1FEA	W 55 H 87 D 61 cm Seat height 40cm Arm height 62cm Weight 12kg
------	--

**Additional products**

800001	Felsted Armchair cushion	£110
	Water repellent cushion	£115



**Felsted Seat 150** £790

1FE15	L 147 H 87 D 61 cm Seat height 40cm Arm height 62cm Weight 19kg
-------	---

**Additional products**

800015	Felsted Seat 150 cushion	£255
	Water repellent cushion	£293

# Glenham

Be transported back to 1920 - Solid, robust and long-lasting, Glenham is an original Barlow Tyrie design that is still widely regarded as the archetypal English garden seat.



**Glenham Junior Armchair** £285

1GLJA W 42 H 65 D 46 cm  
Seat height 30cm Arm height 46cm  
Weight 7kg



**Glenham Armchair** £650

1GLA W 58 H 90 D 64 cm  
Seat height 40cm Arm height 63cm  
Weight 16kg

**Additional products**  
800001 Glenham Armchair cushion £100  
Water repellent cushion £115



**Glenham Seat 150** £1025

1GL15 L 149 H 90 D 64 cm  
Seat height 40cm Arm height 63cm  
Weight 26kg

**Additional products**  
800015 Glenham Seat 150 cushion £255  
Water repellent cushion £293



**Glenham Seat 180** £1225

1GL18 L 180 H 90 D 64 cm  
Seat height 41cm Arm height 63cm  
Weight 33kg

**Additional products**  
800018 Glenham Seat 180 cushion £275  
Water repellent cushion £316



**Glenham Seat 240** £1725

1GL24 L 236 H 90 D 64 cm  
Seat height 41cm Arm height 63cm  
Weight 43kg

**Additional products**  
800055 Glenham Seat 240 cushion £410  
Water repellent cushion £472



**Glenham Curved Seat 285 Radius** £2500

1GLR28 L 224 H 90 D 64 cm  
Seat height 41cm Arm height 63cm  
Weight 36kg



**Glenham Hexagonal Tree Seat** £1925

1GLHE Ø 224 H 90 cm (price per half)  
Seat height 41cm  
Weight 45kg



**Glenham Circular Tree Seat** £3350

1GLSC Ø 220 H 90 cm (price per half)  
Seat height 41cm  
Weight 46kg



Glenham Curved Seat 285

# Newport



Newport Rocking Chairs and London Seat

Newport is synonymous with top notch, high quality – the best. We believe that our rocker is the best in its class too and is one of the most comfortable rocking chairs you will find.



### Newport Rocking Chair £875

1NER	W 64 H 105 D 89 cm Seat height 42cm Arm height 68cm Weight 13kg Assembly required
------	--

#### Additional products

800002	Full seat and back cushion	£225
	Water repellent cushion	£259
800003	Seat cushion only	£100
	Water repellent cushion	£115

# Reims

Designed to accommodate 12 bottles of Champagne plus the appropriate amount of ice – other refreshments are always welcome too.



<b>Reims Refreshment Chest</b>		£1900
3RE	L 81 W 58 H 60 cm Weight 35kg	
<b>Additional products</b>		
400774	Cover	£100

# Rothesay

The mighty Rothesay seat is the heaviest in our teak collection. Suitable for large gardens, streets, and commemorative locations, the rails can be carved with a message or fitted with a bronze plaque.



<b>Rothesay Estate Chair</b>		£995
1ROA	L 70 H 90 D 66 cm Seat height 41cm Arm height 67cm Weight 24kg	
<b>Additional Products</b>		
800054	Cushion	£110
	Water repellent cushion	£120



<b>Rothesay Seat 180</b>		£1650
1RO18	L 182 H 90 D 66 cm Seat height 41cm Arm height 67cm Weight 37kg	
<b>Additional products</b>		
800052	Rothesay Seat 180 cushion	£280
	Water repellent cushion	£322



<b>Rothesay Seat 240</b>		£2200
1RO24	L 240 H 90 D 66 cm Seat height 41cm Arm height 67cm Weight 51kg	
<b>Additional products</b>		
800053	Rothesay Seat 240 cushion	£410
	Water repellent cushion	£475

## Sissinghurst

The Sissinghurst is our interpretation of a design by the much respected Edwardian architect Sir Edwin Lutyens, who designed the seat for the grounds of Sissinghurst castle.



**Sissinghurst Seat 195** £1850

1SI W 196 H 106 D 59 cm  
 Seat height 45cm Arm height 74cm  
 Weight 38kg

Additional products		
800065	Sissinghurst Seat 195 cushion	£275
	Water repellent cushion	£316

## Waveney

The Waveney is a graceful English design with gently curving top rail, shaped armrests and beautifully turned tapering front legs.



**Waveney Seat 120** £735

1WA12 L 116 H 87 D 58 cm  
 Seat height 40cm Arm height 62cm  
 Weight 15kg

Additional products		
800012	Waveney Seat 120 cushion	£255
	Water repellent cushion	£259

## Ceramic Tabletops



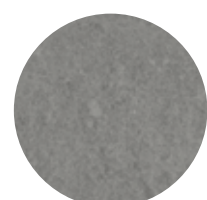
**Oxide**

.805



**Frost**

.806



**Dusk**

.808

We offer our ceramic tabletops in ‘high-fired’ ceramic that are ideal for outdoor use; scratch-proof, weather-resistant and attractive. All ceramics have a wipe clean surface with good colour stability

Monterey ceramic tabletops are available in Oxide and Frost and the Equinox ceramic tabletops, including our extending tables, use Frost and Dusk. Please note that we supply the Mercury serving table (2MES) with a standard ceramic top in Nero Black but we have a selection of optional ceramic tops (2MEST) as follows: .805 Oxide; .806 Frost and .808 Dusk.

### Ceramic features:

- Ideal for outdoor use; scratch-proof, weather-resistant and long-lasting beauty
- Wipe clean surface and good colour stability
- A ‘high-fired’ Italian ceramic that is very functional

### How do I care for ceramic surfaces?

Ceramic resists scratching and is not harmed by organic and inorganic solvents, disinfectants, and detergents. It can be easily cleaned without affecting its surface characteristics. We recommend using no more than soapy water and a sponge to maintain the aesthetic and practical qualities of this exceptional material.

### The aesthetic properties

The ceramic sheets we use are very large, which makes them ideal for a one-piece table top. In addition to being functional this ‘high-fired’ Italian ceramic has a lot of design detail.

### What are the features of Laminam ceramic?

Manufactured using advanced techniques, the sheets combine reduced thickness and large size with very high resistance to mechanical stresses, chemicals, wear, scratches, deep abrasion and bending, are easy to sanitise, resistant to frost, fire, mould and UV rays. All the features and chromatic properties of the sheets are unalterable, and remain unchanged over time and in the presence of all kinds of weather conditions. A revolutionary material respectful of the environment: natural raw materials, sustainable technology, products entirely recyclable are the basis of Laminam’s green policy. Reaction to fire means “degree of participation of a material in the development and propagation of fire to which it is subjected”; as regards this feature, materials like Laminam is assigned to European classes according to their increased degree of participation in combustion, in accordance with standard EN 13501. The reaction to fire therefore assesses the higher or lower propensity a

material has to participate in a fire. While the fire resistance, which is a property related to a system or a structure and not to a single material, is different. Laminam does not contain organic material therefore it is resistant to fire and high temperatures. In the event of fire it does not release smoke or toxic substances.

### Innovation

Ceramics have thicker, single layer sheets with a fibreglass mesh backing designed to ensure surface evenness. Often referred to as ‘high-fired’ due to the fact it is baked/fired in an electric kiln at exceptionally high temperatures (around 1220°C / over 2000°F) to produce a porcelain product that has high surface strength. The scientific term is sintering, the process of compacting and forming a solid mass of material by heat. These fine sheets are then cut, profiled, and polished by hand to give a smooth soft edge. This Italian made ceramic makes our tabletops exceptionally resistant to breakage. This product has many exceptional features, including;

- Non-porous, meaning it is naturally anti-bacterial and hygienic
- Does not require annual sealing unlike natural marble and granite
- Frost proof; winter snows will not harm it.
- Scratch-, stain- and UV-resistant properties



Monterey 100 Dining Table with Frost Ceramic top



Monterey 100 Dining Table with Oxide Ceramic and Monterey Dining Armchairs in full teak



## Inscriptions

Our inscription service is available for most of our teak armchairs, benches, and seats. The inscription is normally placed on the top rail but could be on the rail under the chair seating or on a table top. This 3D-lettering is carved in a traditional serif typeface using a 'V'-cut, which allows the inscription to be read easily from the side as well as from immediately in front, which is an advantage over a standard 'straight-cut' letter.

As an alternative to carved inscriptions, we offer bronze plaques with lettering set in cream vitreous enamel. A choice of lettering and font styles is available. The finished plaque is then recessed into the face of the rail and held in position using a special hidden vandal-proof fitting.

### Inscription service and bronze plaque features:

- 3D-lettering is carved in a traditional serif typeface
- We use a 'V'-cut inscription, that is easily read from the side and immediately in front
- We offer bronze plaques, unique and bespoke in design, and we can make these to length

### Carved Inscription – Serif font

Our carved inscription service may be used on most of our teak armchairs, benches and seats. We normally supply the inscription in capital letters using a Times New Roman serif font at 2.5cm (1") in height. If more than one line of text is required we might need to reduce the height of text depending on the model of seat. The maximum number of characters and length of an inscription will depend on the seat model, the length of the seat, the height of text, whether upper or lower case or the font used. Our Rothesay seat allows 3 rows of text whilst other seats can only accommodate up to 2 rows. Times New Roman is our

standard font but we are able to supply bespoke inscriptions in other fonts plus inscriptions in foreign language scripts such as Chinese or Arabic. We can supply teak panels in a seat back with a logo or a club crest.

### Bronze Plaques

Our bronze plaque service may be used with most of our seats and benches. We supply as standard a 57mm deep (approx. 2") bronze plaque with 6mm – (0.25") block letters, see detailed image opposite.

However we can supply plaques to any size and lettering in any font – please inquire.

### Bronze Plaque Letters

The engraved lettering is filled with vitreous cream enamel that is not affected by an outdoor environment. Alternative soft fillings, offered by other suppliers and often used on plaques sited inside a building, are totally unsuitable for use outdoors and should be avoided. Our plaques are recessed to finish flush with the surface of the seat rail with a hidden fixing that leaves the visible face of the plaque clear and makes its unauthorised removal difficult. Plaques allow you to be creative with your choice of font or image.



Glenham and Rothesay seats with inscriptions and plaques

## Security fastenings

We have two types of security fastener to prevent the unauthorised movement of seats or other items in public areas.

We supply stainless steel fixing irons that must be cast into a concrete block to secure a seat. We supply brass fixing brackets to secure any item of furniture in place on a solid floor. These polished brass security fasteners are supplied with tamper-proof fixings for use on concrete, paving, and wood floors.

### Security fasteners features:

- Stainless steel seat fixing irons – set of 2
- Anchors a bench or chair into the ground
- Brass security fasteners – set of 4
- Supplied with tamper-proof fixings



**Seat Fixing Irons**  
(2 required – price each)

£10

4FI	L 24 W 4 cm
	Weight 1kg

### Note

Stainless steel seat security fasteners to prevent unauthorised movements of seats in public places. These fasteners must be cast into a concrete block.



**Brass Security Fasteners**  
(set of 4)

£90

4SF	W 5 H 8 cm
	Weight 0.75kg

### Note

A set of 4 polished brass security fasteners to prevent the unauthorised movement of seats or other items in public areas. Supplied with a tamper proof fixing for use on floors of concrete, paving or wood.

Rothesay 180 Seat



Glenham 150 Seat

