



Sales & Service
Mark Day
07799 332295
mark@day.fm
www.daylinks.co.uk

- ▶ **Tines**
- ▶ **Blades**
- ▶ **Brushes**
- ▶ **Bedknives**
- ▶ **Accessories**

And more inside!

www.daylinks.co.uk

2015



Index



Verticut/Scarifying/Slitting Blades

• Amazone/Graden/Jacobsen	Page 1
• John Deere/Ryan/Mataway/Sisis	Page 2
• Huxley/Long Equip/Trilo/Toro/Wiedenmann	Page 3

TINE ADAPTERS

• Various adapters - Selvatici/Soil Reliever/Vertidrain/Toro/John Deere/Ransomes Ryan/Multicore/Groundsman/Wiedenmann	Page 4
-----------------------------------------------------------------------------------------------------------------------	--------

Verti-Core (plus Rapidcore 1.2m & 1.6m)

• Hollow Tine hardened / carbide tipped	Page 5
• Cross Tine hardened / carbide tipped/solid tine	Page 6

Verti-Drain

• Hollow Tine hardened	Page 7
• Hollow Tine carbide tipped	Page 8
• Cross Tine hardened	Page 9
• Solid Tine hardened	Page 10
• Solid Tine hardened (.cont) & Konispoon ® Flat Hardened	Page 11

John Deere/Multicore

• Hollow Tine hardened	Page 12
• Hollow Tine carbide tipped & Konispoon ® flat hardened	Page 13
• Cross Tine hardened / carbide tipped	Page 14
• Solid Tine hardened & Konispoon ® round hardened	Page 15

Groundsman

• Hollow Tine hardened	Page 16
• Hollow Tine carbide tipped	Page 17
• Cross Tine hardened & carbide tipped	Page 18
• Solid Tine hardened & Konispoon ® round hardened	Page 19

Ransomes / Jacobsen/ Ryan GA30

• Hollow Tine hardened	Page 20
• Hollow Tine carbide tipped & Flat Tine hardened	Page 21
• Cross Tine hardened / carbide tipped	Page 22
• Solid Tine hardened & Konispoon ® round hardened	Page 23

Soil Reliever/ Selvatici

• Hollow Tine hardened	Page 24
• Hollow Tine carbide tipped	Page 25
• Cross Tine hardened / carbide tipped / Konispoon ® flat hardened	Page 26
• Solid Tine hardened	Page 27/28

(Index cont. on next page)



Call Mark Day 07799332295

Index

Toro

- Hollow Tine hardened Page 29/30
- Hollow Tine carbide tipped & Konispoon ® round hardened Page 31
- Cross Tine hardened & carbide tipped Page 32
- Konispoon ® flat hardened & Solid Tine hardened Page 33

Coremaster

- Hollow Tine hardened / carbide tipped Cross Tine hardened Page 34

Wiedenmann

- Hollow Tine hardened Page 35
- Hollow Tine carbide tipped / Terra Rake Replacement Tine Page 36
- Cross Tine hardened / carbide tipped / Konispoon ® Flat Hardened Page 37
- Solid Tine hardened Page 38/39

Brushes

- Brush request form Page 40
- Brush Sections – Wessex/Tomlin/Thatchaway Page 41
- Brush Sections – Sisis Page 42

BEDKNIVES

- Jacobsen and Ransomes bedknives Page 43
- Toro and John Deere bedknives Page 44

Accessories

- Back-Lapping Paste Page 45
- Accu-Guage – Height of cut setting tool Page 46
- Top Links (incl.Hydraulic) & PTO Shaft Assemblies and Safety Covers Page 47
- Bare-Co universal PTO Guards Page 48
- Replacement Seats Page 49
- TAS Trimmer heads Page 50

Raycam Products

- Raycam - Sportsfield Harrow / Line Marker Page 51
- Raycam - EasyDrag Rubber Mats Page 52
- Raycam - EasyDrag Accessories / Steel Mats Page 53
- Raycam - V-brush Page 54
- Imants Penetrometer Page 55

Technical Data

- Tine Terminology Explained Page 56

Verticut/ Scarifying/ Slitting Blades

Amazone – Scarifying Blade

Part No.	Construction	Number of Edges	Working Width	Total Length	Price £
8746000	Hardened	1-cut	2 mm	85 mm	2.20
8746000H	Carbide Tipped	1-cut	2 mm	85 mm	4.70
8356000	Hardened	1-cut	3 mm	85 mm	2.20
8356000H	Carbide Tipped	1-cut	3 mm	85 mm	4.70

Graden – Scarifying Blade

Part No.	Construction	Number of Edges	Working Width	Ø	Price £
1901768H	Carbide Tipped	8-cut	1,5 mm	190 mm	15.95
★ 1902467H	Carbide Tipped	8-cut	2 mm	190 mm	15.95
1903588H	Carbide Tipped	8-cut	3 mm	190 mm	15.95
1901769H	Carbide Tipped	8-cut	1,5 mm	210 mm	17.95
★ 1902729H	Carbide Tipped	8-cut	2 mm	210 mm	17.95
1903751H	Carbide Tipped	8-cut	3 mm	210 mm	17.95

Jacobsen Green King IV and V - Scarifying Blade

Part No.	Construction	Number of Edges	Working Width	Ø	Price £
335449	Hardened	7-cut	0,8 mm	135 mm	4.75
1102405H	Carbide Tipped	11-cut	2 mm	135 mm	12.50

The length measurements refer to the total length of the tools. Our general Terms and Conditions apply. Prices plus VAT, freight and additional costs. Allowing for price and technical changes.



John Deere – Verticut Blade

Part No.	Construction	Number of Edges	Working Width	Ø	Price £
1102406H Side Wing	Carbide Tipped	11-cut	2 mm	135 mm	12.50

Ryan/Mataway – Verticut/Scarifying Blade

Part No.	Construction	Number of Edges	Working Width	Ø	Price £
516900	Hardened	2-cut	1,6 mm	185 mm	3.65
516898	Hardened	2-cut	3 mm	185 mm	3.75
1914291H	Carbide Tipped	5-cut	2 mm	185 mm	16.95

Sisis – Scarifying Blade

Part No.	Construction	Number of Edges	Working Width	Ø	Price £
2245745 Auto-Rotorake	Hardened	2-cut	2 mm	220 mm	4.40
2245745H Auto-Rotorake	Carbide Tipped	2-cut	2 mm	220 mm	8.50
3660835H Sisis 600	Carbide Tipped	2-cut	1,3 mm	240 mm	8.75
3610636H Sisis 600	Carbide Tipped	2-cut	2 mm	240 mm	9.95
3623137H Sisis 600	Carbide Tipped	2-cut	3 mm	240 mm	9.95

The length measurements refer to the total length of the tools. Our general Terms and Conditions apply. Prices plus VAT, freight and additional costs. Allowing for price and technical changes.



Verticut/ Scarifying/ Slitting Blades

Huxley – Verticut & Slitting Blades

Part No.	Construction	Number of Edges	Working Width	Ø	Price £
AGO242	Hardened Slitting	2	4 mm	300 mm	9.95
AGO242H	Hardened Slitting	2	6 mm	300 mm	10.60
4016739	Hardened	2	2 mm	240 mm	4.50
4016739H	Hardened	2	2 mm	240mm	8.95

Long Equip / Trilo – Scarifying Blade

Part No.	Construction	Number of Edges	Working Width	Total Length	Price £
1332726	Hardened	1	3 mm	135 mm	3.50
1332726H	Carbide Tipped	1	3.2 mm	135 mm	6.50
AG00379 Fan Paddle	Hardened	1	110 mm	115 mm	15.95

Toro – Verticut Blade

Part No.	Construction	Number of Edges	Working Width	Ø	Price £
1105404H Reel Side Wing	Carbide Tipped	11-cut	2 mm	135 mm	12.50

Wiedenmann – Scarifying Blade

Part No.	Construction	Number of Edges	Working Width	Total Length	Price £
W3085250	Hardened	1-cut	3 mm	85 mm	2.25
W3085250H	Carbide Tipped	1-cut	3 mm	85 mm	3.95

The length measurements refer to the total length of the tools. Our general Terms and Conditions apply. Prices plus VAT, freight and additional costs. Allowing for price and technical changes.



Tine Adaptors

Part No.	Mounting / Outer Ø	Inside Ø	Machine	Price £
2351853	24 mm	18 mm	SELVATICI/SOIL RELIEVER/ VERTIDRAIN	6.95
1214032	22.3 mm	12 mm	TORO/JOHN DEERE	5.00
2239270	22.3 mm	9.5 mm	JOHN DEERE/TORO	5.00
2214061	22.3 mm	8 mm	JOHN DEERE/TORO	5.00
1214031	19 mm	12 mm	JOHN DEERE/RANSOMES/ RYAN/TORO/MULTICORE/ GROUNDSMAN	5.00
1925117	19 mm	9.5 mm	JOHN DEERE/RANSOMES/ RYAN/VERTICORE/TORO/ MULTICORE/GROUNDSMAN	5.00
1908248	19 mm	8 mm	JOHN DEERE/RANSOMES/ RYAN/VERTICORE/TORO/ MULTICORE/GROUNDSMAN	5.00
1906431	19 mm	6 mm	JOHN DEERE/VERTICORE/ MULTICORE	5.00
1812781	18 mm	12 mm	VERTIDRAIN	7.00
1209475	12.7 mm	6 mm	RANSOMES/RYAN GROUNDSMAN	5.00
NEW W1208067	12 mm	8 mm	WIEDENMANN	3.50
1208067	12 mm	8 mm	VERTIDRAIN/SELVATICI/ SOIL RELIEVER.	3.50
1206456	12 mm	6 mm	VERTIDRAIN/SELVATICI SOIL RELIEVER	3.50
9506403	9.5 mm	6 mm	TORO	5.00



Verti-Core/ Rapidcore

Verti-Core / Rapidcore – Hollow Tines

Part No.	Mounting Ø	Outside Ø	Total Length	Core Ø	Price £
08-9513123 Side Eject	8 mm	9.5 mm	125 mm	5 mm	4.95
1008755 Side Eject	8 mm	11 mm	130 mm	6 mm	5.50
1912807 Side Eject	19 mm	12 mm	155 mm	6 mm	6.95
1912771 Side Eject	19 mm	12.7 mm	125 mm	9 mm	3.50
1914415 Side Eject	19 mm	12.7 mm	145 mm	9 mm	3.75
1615765 Side Eject	19 mm	16 mm	155 mm	9.5 mm	9.30
1912761 Side Eject	19 mm	16 mm	125 mm	12 mm	3.50
1914417 Side Eject	19 mm	16 mm	145 mm	12 mm	3.75
2015766 Side Eject	19 mm	20 mm	155 mm	13 mm	8.75
2514260 Side Eject	19 mm	26 mm	140 mm	16 mm	10.25
4019749 Side Eject	19 mm	40 mm	145 mm	30 mm	26.50

Verti-Core / Rapidcore – Hollow Tines with Carbide Tip

Part No.	Mounting Ø	Outside Ø	Total Length	Core Ø	Price £
08-9513123H Side Eject	8 mm	11 mm	135 mm	5.5 mm	7.60
1912807H Side Eject	19 mm	12 mm	155 mm	6 mm	9.75
1615765H Side Eject	19 mm	16 mm	155 mm	9 mm	13.95
2015766H Side Eject	19 mm	20 mm	155 mm	12 mm	13.95

The length measurements refer to the total length of the tools. Our general Terms and Conditions apply. Prices plus VAT, freight and additional costs. Allowing for price and technical changes.



Verti-Core / Rapidcore - Cross Tines

Part No.	Mounting Ø	Outside Ø	Total Length	Rib Width	Price £
9510720	9,5 mm	9,5 mm	102 mm	1,5 mm	6.60
1916900	19 mm	12 mm	160 mm	2,5 mm	9.25
2019457	19 mm	20 mm	140 mm	3,0 mm	11.50
2419459	19 mm	24 mm	140 mm	5,0 mm	15.50
2619461	19 mm	26 mm	140 mm	5,0 mm	15.50

Verti-Core / Rapidcore - Cross Tines Carbide Tipped

Part No.	Mounting Ø	Outside Ø	Total Length	Rib Width	Price £
1214012H	19 mm	9,5 mm	102 mm	1,5 mm	13.95

Verti-Core / Rapidcore – Solid Tines

Part No.	Mounting Ø	Outside Ø	Total Length	Price £
0614402	6 mm	6 mm	140 mm	1.60
0815052	8 mm	8 mm	150 mm	2.10
★ 1906872	19 mm	6 mm	160 mm	4.95
★ 1908873	19 mm	8 mm	160 mm	4.95
★ 1910929	19 mm	10 mm	160 mm	4.95
★ 1912774	19 mm	12 mm	160 mm	4.95
★ 1916785	19 mm	16 mm	160 mm	4.95

The length measurements refer to the total length of the tools. Our general Terms and Conditions apply. Prices plus VAT, freight and additional costs. Allowing for price and technical changes.

Verti-Drain – Hollow Tines

(All Verti-Drain Hollow tines are Side Eject)

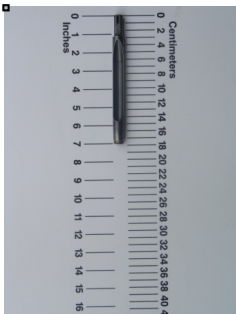
Produced from a full steel billet, shatter-proof with long term durability

Part No.	Mounting Ø	Outside Ø	Total Length	Core Ø	Price £
1008755	8 mm	11 mm	150 mm	6 mm	5.50
1214770	12 mm	12 mm	160 mm	6,5 mm	7.25
1618001	12 mm	16 mm	180 mm	9,5 mm	10.95
1624001	12 mm	16 mm	225 mm	9,5 mm	12.50
2018002	12 mm	20 mm	180 mm	12 mm	13.50
2024002	12 mm	20 mm	225 mm	12 mm	15.95
2031004	12 mm	20 mm	295 mm	12 mm	18.95
2031003	18 mm	20 mm	295 mm	12 mm	19.00
2531005	18 mm	26 mm	310 mm	16 mm	27.00
2536042	18 mm	26 mm	360 mm	16 mm	23.75
2531006	24 mm	26 mm	310 mm	16 mm	21.55
3036007	18 mm	30 mm	360 mm	21 mm	34.75
3036008	24 mm	30 mm	360 mm	21 mm	32.00
3536010	24 mm	35 mm	360 mm	27 mm	36.75

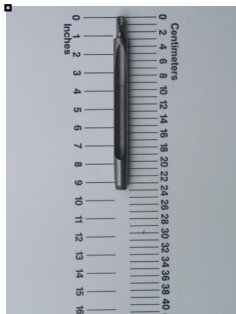
The length measurements refer to the total length of the tools. Our general Terms and Conditions apply. Prices plus VAT, freight and additional costs. Allowing for price and technical changes.

Verti-Drain – Hollow Tines Carbide Tipped (All Verti-Drain Hollow tines are Side Eject)

Part No.	Mounting Ø	Outside Ø	Total Length	Core Ø	Price £
1618001H	12 mm	16 mm	180 mm	9 mm	22.75
1624001H	12 mm	16 mm	225 mm	9 mm	26.95
2018002H	12 mm	20 mm	180 mm	12 mm	27.50
2024002H	12 mm	20 mm	225 mm	12 mm	29.50
2024119H	18 mm	20 mm	225 mm	12 mm	29.70
2031004H	12 mm	20 mm	295 mm	12 mm	32.00
2031003H	18 mm	20 mm	295 mm	12 mm	32.00
2531005H	18 mm	26 mm	310 mm	16 mm	38.95
2536042H	18 mm	26 mm	360 mm	16 mm	42.00
2531006H	24 mm	26 mm	310 mm	16 mm	38.95



1618001H



2024002H



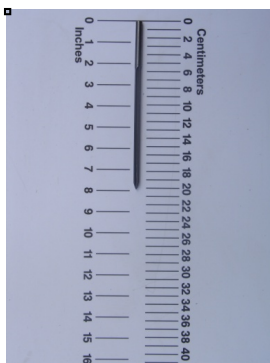
2031003H

The length measurements refer to the total length of the tools. Our general Terms and Conditions apply. Prices plus VAT, freight and additional costs. Allowing for price and technical changes.

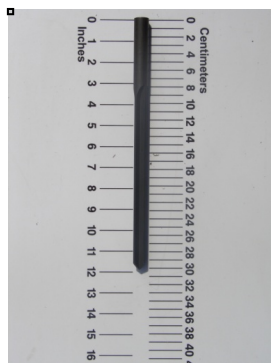


Verti-Drain – Cross Tines

Part No.	Mounting Ø	Outside Ø	Total Length	Rib Width	Price £
0820719	8 mm	8 mm	200 mm	1,5 mm	7.25
1214012V	12 mm	12 mm	145 mm	2,5 mm	9.95
1220244	12 mm	12 mm	200 mm	2,5 mm	11.50
1225830	12 mm	12 mm	250 mm	2,5 mm	13.75
1218452	12 mm	18 mm	200 mm	3 mm	13.95
1832453	18 mm	18 mm	320 mm	3 mm	21.95
2235412	18 mm	22 mm	320 mm	5 mm	23.95
2432473	18 mm	24 mm	320 mm	5 mm	26.50
2532454	24 mm	24 mm	320 mm	5 mm	26.50



0820719



1832453

The length measurements refer to the total length of the tools. Our general Terms and Conditions apply. Prices plus VAT, freight and additional costs. Allowing for price and technical changes.

Verti-Drain – Solid Tines

Part No.	Mounting Ø	Outside Ø	Total Length	Price £
0614402	6 mm	6 mm	140 mm	1.60
0620455	6 mm	6 mm	175 mm	1.65
0817511	8 mm	8 mm	175 mm	1.95
0820049	8 mm	8 mm	200 mm	2.00
0825064	8 mm	8 mm	250 mm	2.15
0830716	8 mm	8 mm	300 mm	2.25
1208800	8 mm	12 mm	155 mm	3.20
1220055	12 mm	12 mm	200 mm	2.15
1225056	12 mm	12 mm	250 mm	2.20
★ 1230012	12 mm	12 mm	300 mm	2.60
★ 1236013	12 mm	12 mm	360 mm	3.25
1612760	12 mm	16 mm	200 mm	5.95
1612829	12 mm	16 mm	250 mm	6.95
1825779	12 mm	18 mm	250 mm	7.75
1825807	18 mm	18 mm	250 mm	4.50

(Solid Tines Hardened continued on next page)

The length measurements refer to the total length of the tools. Our general Terms and Conditions apply. Prices plus VAT, freight and additional costs. Allowance for price and technical changes.



Verti-Drain

Verti-Drain – Solid Tines

Part No.	Mounting Ø	Outside Ø	Total Length	Price £
1830014	18 mm	18 mm	300 mm	4.70
★ 1835015	18 mm	18 mm	350 mm	4.80
1840016	18 mm	18 mm	400 mm	5.85
1845043	18 mm	18 mm	450 mm	6.00
2535018	18 mm	24 mm	350 mm	8.95
2535019	24 mm	24 mm	350 mm	8.75
2540020	24 mm	24 mm	400 mm	8.95
★ 2545021	24 mm	24 mm	450 mm	8.95

Verti-Drain – Flat / Chisel Tine

Part No.	Mounting Ø	Element Width	Element Thickness	Total Length	Price £
W1219844	12 mm	19 mm	6 mm	220 mm	13.00

The length measurements refer to the total length of the tools. Our general Terms and Conditions apply. Prices plus VAT, freight and additional costs. Allowing for price and technical changes.



John – Deere / Multicore – Hollow Tines

Part No.	Mounting Ø	Outside Ø	Total Length	Core Ø	Price £
9513123 Side Eject	9,5 mm	9,5 mm	125 mm	5 mm	5.05
9514745 Side Eject	9,5 mm	11 mm	145 mm	6 mm	5.95
1912807 Side Eject	19 mm	12 mm	155 mm	6 mm	6.95
1912130	19 mm	12,7 mm	125 mm	10mm	2.10
1912771 Side Eject	19 mm	12,7 mm	125 mm	9 mm	3.70
1914132	19 mm	12,7 mm	145 mm	10mm	2.50
1914415 Side Eject	19 mm	12,7 mm	145 mm	10mm	3.75
1615765 Side Eject	19 mm	16 mm	155 mm	9,5mm	9.30
1912134	19 mm	16 mm	125 mm	13mm	2.15
1912761 Side Eject	19 mm	16 mm	125 mm	12mm	3.70
1914136	19 mm	16 mm	145 mm	13mm	2.50
1914417 Side Eject	19 mm	16 mm	145 mm	12 mm	3.75
2015766 Side Eject	19 mm	20 mm	155 mm	13 mm	8.75
1916886	19 mm	16 mm	165 mm	13 mm	2.80
2514260 Side Eject	19 mm	26 mm	140 mm	16 mm	10.25
2514266 Side Eject	22.3 mm	26 mm	140 mm	16 mm	10.25

The length measurements refer to the total length of the tools. Our general Terms and Conditions apply. Prices plus VAT, freight and additional costs. Allowing for price and technical changes.



John – Deere / Multicore – Hollow Tines Carbide Tipped

Part No.	Mounting Ø	Outside Ø	Total Length	Core Ø	Price £
9513123H Side Eject	9,5 mm	11 mm	145 mm	5,5 mm	7.95
1912807H Side Eject	19 mm	12 mm	155 mm	6 mm	9.75
1912131H	19 mm	12,7 mm	125 mm	9 mm	9.50
1914133H	19 mm	12,7 mm	145 mm	9 mm	10.50
1914416H Side Eject	19 mm	12,7 mm	145 mm	9 mm	12.95
1615765H Side Eject	19 mm	16 mm	155 mm	9 mm	13.95
1912135H	19 mm	16 mm	125 mm	12 mm	10.00
1914137H	19 mm	16 mm	145 mm	12 mm	10.50
2015766H Side Eject	19 mm	20 mm	155 mm	12 mm	13.95

John Deere / Multicore - Flat / Chisel Tines

Part No.	Mounting Ø	Element Width	Element Thickness	Total Length	Price £
1219841	19 mm	19 mm	6 mm	140 mm	9.95
1219842	19 mm	19 mm	6 mm	160 mm	11.50

The length measurements refer to the total length of the tools. Our general Terms and Conditions apply. Prices plus VAT, freight and additional costs. Allowing for price and technical changes.



John Deere / Multicore - Cross Tines

Part No.	Mounting Ø	Outside Ø	Total Length	Rib Width	Price £
9510720	9,5 mm	9,5 mm	102 mm	1,5 mm	6.60
9515750	9,5 mm	9,5 mm	140 mm	1,5 mm	6.95
9516825	9,5 mm	9,5 mm	160 mm	1,5 mm	7.95
9514120	9,5 mm	12 mm	135 mm	2,5 mm	9.50
1916900	19 mm	12 mm	160 mm	2,5 mm	9.25
2019457	19 mm	20 mm	140 mm	3 mm	11.50
2419459	19 mm	24 mm	140 mm	5 mm	15.50
2422460	22,3 mm	24 mm	140 mm	5 mm	15.00
2619461	19 mm	26 mm	140 mm	5 mm	15.50
2622462	22,3 mm	26 mm	140 mm	5 mm	15.50

John Deere / Multicore - Cross Tines Carbide Tipped

Part No.	Mounting Ø	Outside Ø	Total Length	Rib Width	Price £
9514120H	9,5 mm	12 mm	135 mm	2,5 mm	13.95
1214012H	19 mm	12 mm	145 mm	2,5 mm	13.95



John Deere / Multicore - Solid Tines

Part No.	Mounting Ø	Outside Ø	Total Length	Price £
0105180	5 mm elbow	5 mm	180 mm	2.20
0108180	8 mm elbow	8 mm	180 mm	2.85
0614402	6 mm	6 mm	140 mm	1.60
0815052	8 mm	8 mm	150 mm	2.10
9512450	9.5 mm	9.5 mm	120 mm	1.60
9515045	9,5 mm	9,5 mm	150 mm	2.25
★ 1906872	19 mm	6 mm	160 mm	4.95
★ 1908873	19 mm	8 mm	160 mm	4.95
★ 1910929	19 mm	10 mm	160 mm	4.95
★ 1912774	19 mm	12 mm	160 mm	4.95
★ 1916785	19 mm	16 mm	160 mm	4.95
2231685	22,3 mm	16 mm	140 mm	8.95

John Deere / Multicore - Konispoon® Round Needle

Part No.	Mounting Ø	Outside Ø	Total Length	Price £
9505847K	9.5 mm	5 mm	140 mm	3.00
9505846K	9.5 mm	5 mm	160 mm	3.15
9506842K	9.5 mm	6 mm	140 mm	5.71
9506845K	9.5 mm	6 mm	160 mm	3.15

The length measurements refer to the total length of the tools. Our general Terms and Conditions apply. Prices plus VAT, freight and additional costs. Allowing for price and technical changes.



Groundsman - Hollow Tines

Part No.	Mounting Ø	Outside Ø	Total Length	Core Ø	Price £
9513123 Side Eject	9.5 mm	9.5 mm	130 mm	5 mm	5.05
1615522 Side Eject	16 mm	16 mm	155 mm	9,4 mm	8.15
2015523 Side Eject	16 mm	20 mm	155 mm	12,5 mm	8.75
1912807 Side Eject	19 mm	12 mm	155 mm	6 mm	6.95
1912130	19 mm	12,7 mm	125 mm	10 mm	2.10
1914132	19 mm	12,7 mm	145 mm	10 mm	2.50
1912771 Side Eject	19 mm	12,7 mm	125 mm	10 mm	3.50
1914415 Side Eject	19 mm	12,7 mm	145 mm	10 mm	3.75
1912134	19 mm	16 mm	125 mm	13 mm	2.15
1914136	19 mm	16 mm	145 mm	13 mm	2.50
1912761 Side Eject	19 mm	16 mm	125 mm	13 mm	3.50
1914417 Side Eject	19 mm	16 mm	145 mm	13 mm	3.75
1916886	19 mm	16 mm	165 mm	13mm	2.80
1916887	19 mm	12.7 mm	165 mm	10mm	2.80
2514260 Side Eject	19 mm	26 mm	140 mm	16 mm	10.25
2514266 Side Eject	22,3 mm	26 mm	140 mm	16 mm	10.25

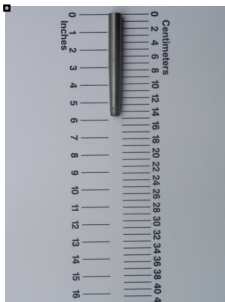
The length measurements refer to the total length of the tools. Our general Terms and Conditions apply. Prices plus VAT, freight and additional costs. Allowing for price and technical changes.



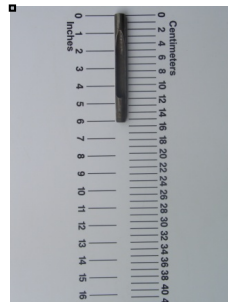
Groundsman

Groundsman - Hollow Tines Carbide Tipped

Part No.	Mounting Ø	Outside Ø	Total Length	Core Ø	Price £
9513123H Side Eject	9,5 mm	11 mm	145 mm	5,5 mm	7.95
1615522H Side Eject	16 mm	16 mm	155 mm	9,5 mm	13.95
2015523H	16 mm	20 mm	155 mm	12,5 mm	13.95
1912807H Side Eject	19 mm	12 mm	155 mm	6 mm	9.75
1912131H	19 mm	12,7 mm	125 mm	9 mm	9.50
1914133H	19 mm	12,7 mm	145 mm	9 mm	10.50
1912135H	19 mm	16 mm	125 mm	12 mm	10.00
1914137H	19 mm	16 mm	145 mm	12 mm	10.50



1914133H



1615522H

The length measurements refer to the total length of the tools. Our general Terms and Conditions apply. Prices plus VAT, freight and additional costs. Allowing for price and technical changes.



Groundsman - Cross Tines

Part No.	Mounting Ø	Outside Ø	Total Length	Rib Width	Price £
9514120	9.5 mm	12 mm	135 mm	2,5 mm	9.50
1274121	12,7 mm	12 mm	140 mm	2,5 mm	9.50
2014463	16 mm	20 mm	140 mm	2,5 mm	10.95
1916900	19 mm	12 mm	160 mm	2,5 mm	9.25
2019457	19 mm	20 mm	140 mm	3 mm	11.50
2419459	19 mm	24 mm	140 mm	5 mm	15.50
2619461	19 mm	26 mm	140 mm	5 mm	15.50

Groundsman - Cross Tines Carbide Tipped

Part No.	Mounting Ø	Outside Ø	Total Length	Rib Width	Price £
9514120H	9.5 mm	12 mm	135 mm	2,5 mm	13.95
1214012H	19 mm	12 mm	140 mm	2,5 mm	13.95
1274121H	12,7 mm	12 mm	140 mm	2,5 mm	13.50

The length measurements refer to the total length of the tools. Our general Terms and Conditions apply. Prices plus VAT, freight and additional costs. Allowing for price and technical changes.



Groundsman

Groundsman - Solid Tines

Part No.	Mounting Ø	Outside Ø	Total Length	Price £
0614402	6 mm	6 mm	140 mm	1.60
0815052	8 mm	8 mm	150 mm	2.10
9512450	9.5 mm	9.5 mm	120 mm	1.60
9515045	9.5 mm	9.5 mm	150 mm	2.25
NEW 1206140	12mm	6 mm	140 mm	3.95
NEW 1208140	12 mm	8 mm	140 mm	3.95
NEW 1210140	12 mm	10 mm	140 mm	3.95
1906872	19 mm	6 mm	160 mm	4.95
1908873	19 mm	8 mm	160 mm	4.95
1910929	19 mm	10 mm	160 mm	4.95
1912774	19 mm	12 mm	160 mm	4.95
1916785	19 mm	16 mm	160 mm	4.95

Groundsman - Konispoon® Round Needle

Part No.	Mounting Ø	Outside Ø	Total Length	Price £
9505847K	9.5 mm	5 mm	140	3.00
9505846K	9.5 mm	5 mm	160	3.15
9506842K	9.5 mm	6 mm	140	3.00
9506845K	9.5 mm	6 mm	160	3.15

The length measurements refer to the total length of the tools. Our general Terms and Conditions apply. Prices plus VAT, freight and additional costs. Allowing for price and technical changes.



Ransomes/Jacobsen

Ryan GA30

Ransomes/Ryan/Jacobsen – Hollow Tines

Part No.	Mounting Ø	Outside Ø	Total Length	Core Ø	Price £
9513123 Side Eject	9,5 mm	9,5 mm	125 mm	5 mm	5.05
9514745 Side Eject	9,5 mm	11 mm	145 mm	6 mm	5.95
1912807 Side Eject	19 mm	12 mm	155 mm	6 mm	6.95
1612474 sideeject	16 mm	12,7 mm	125 mm	10 mm	5.50
1615522 Side eject	16 mm	16 mm	155 mm	10 mm	8.15
2015523	16 mm	20 mm	155 mm	13 mm	8.75
1912130	19 mm	12,7 mm	125 mm	10 mm	2.10
1914132	19 mm	12,7 mm	145 mm	10 mm	2.50
1914415 Side Eject	19 mm	12,7 mm	145 mm	10 mm	3.75
1916887	19 mm	12,7 mm	165 mm	10 mm	2.80
1615765 Side Eject	19 mm	16 mm	155 mm	9,5 mm	9.30
1912134	19 mm	16 mm	125 mm	13 mm	2.15
1914136	19 mm	16 mm	145 mm	13 mm	2.50
1914417 Side Eject	19 mm	16 mm	145 mm	12 mm	3.75
2015766 Side Eject	19 mm	20 mm	155 mm	13 mm	8.75
1916886	19 mm	16 mm	165 mm	13 mm	2.80
2514260 Side Eject	19 mm	26 mm	140 mm	16 mm	10.25



Ransomes/Jacobsen

Ryan GA30

Ransomes/Ryan/Jacobsen – Hollow Tines Carbide Tipped

Part No.	Mounting Ø	Outside Ø	Total Length	Core Ø	Price £
9513123H Side Eject	9,5 mm	11 mm	145 mm	5,5 mm	7.95
2015523H Side eject	16 mm	20 mm	155 mm	12.5 mm	13.95
1912807H	19 mm	12 mm	155 mm	6 mm	9.75
1912131H	19 mm	12,7 mm	125 mm	9 mm	9.50
1914133H	19 mm	12,7 mm	145 mm	9 mm	10.50
1914416H Side Eject	19 mm	12,7 mm	145 mm	9 mm	12.95
1615765H Side Eject	19 mm	16 mm	155 mm	9 mm	13.95
1912135H	19 mm	16 mm	125 mm	12 mm	10.00
1914137H	19 mm	16 mm	145 mm	12 mm	10.50
2014027H Side Eject	19 mm	16 mm	155mm	12 mm	13.00
2015766H Side Eject	19 mm	20 mm	155 mm	12 mm	13.95

Ransomes/Ryan/Jacobsen – Flat / Chisel Tines

Part No.	Mounting Ø	Element Width	Element Thickness	Total Length	Price £
1219841	19 mm	19 mm	6 mm	140 mm	9.95
1219842	19 mm	19 mm	6 mm	160 mm	11.50

The length measurements refer to the total length of the tools. Our general Terms and Conditions apply. Prices plus VAT, freight and additional costs. Allowing for price and technical changes.



Ransomes/Jacobsen

Ryan GA30

Ransomes/Ryan/Jacobsen – Cross Tines

Part No.	Mounting Ø	Outside Ø	Total Length	Rib Width	Price £
9510720	9,5 mm	9,5 mm	102 mm	1,5 mm	6.60
9516825	9,5 mm	9,5 mm	160 mm	1,5 mm	7.95
9514120	9,5 mm	12 mm	135 mm	2,5 mm	9.50
1916900	19 mm	12 mm	160 mm	2,5 mm	9.25
1274121	12,7 mm	12 mm	140 mm	2,5 mm	9.50
2014463	16 mm	20 mm	140 mm	3 mm	10.95
2019457	19 mm	20 mm	140 mm	3 mm	11.50
2419459	19 mm	24 mm	140 mm	5,mm	15.50
2619461	19 mm	26 mm	140 mm	5 mm	15.50

Ransomes/Ryan/Jacobsen – Cross Tines Carbide Tipped

Part No.	Mounting Ø	Outside Ø	Total Length	Rib Width	Price £
9514120H	9,5 mm	12 mm	135 mm	2,5 mm	13.95
1214012H	19 mm	12 mm	145 mm	2,5 mm	13.95
1274121H	12,7 mm	12 mm	140 mm	2,5 mm	13.50

The length measurements refer to the total length of the tools. Our general Terms and Conditions apply. Prices plus VAT, freight and additional costs. Allowing for price and technical changes.



Ransomes/Jacobsen

Ryan GA30

Ransomes/Ryan/Jacobsen - Solid Tines

Part No.	Mounting Ø	Outside Ø	Total Length	Price £
0614402	6 mm	6 mm	140 mm	1.60
0815052	8 mm	8 mm	150 mm	2.10
9512450	9,5 mm	9,5 mm	120 mm	1.60
9515045	9,5 mm	9,5 mm	150 mm	2.25
1271796	12,7 mm	8 mm	140 mm	6.95
★ 1906872	19 mm	6 mm	160 mm	4.95
★ 1908873	19 mm	8 mm	160 mm	4.95
★ 1910929	19 mm	10 mm	160 mm	4.95
★ 1912774	19 mm	12 mm	160 mm	4.95
★ 1916785	19 mm	16 mm	160 mm	4.95

Ransomes/Ryan/Jacobsen - Konispoon® Round Needle

Part No.	Mounting Ø	Outside Ø	Total Length	Price £
9505847K	9,5mm	5mm	140mm	3.00
9505846K	9,5mm	5mm	160mm	3.15
9506842K	9,5mm	6mm	140mm	3.00
9506845K	9,5mm	6mm	160mm	3.15

The length measurements refer to the total length of the tools. Our general Terms and Conditions apply. Prices plus VAT, freight and additional costs. Allowing for price and technical changes.



Soil Reliever/ Selvatici

Soil Reliever /Selvatici - Hollow Tines

(All Soil Reliever/Selvatici Hollow tines are Side Eject)

Produced from a full steel billet, shatter-proof with long term durability

Part No.	Mounting Ø	Outside Ø	Total Length	Core Ø	Price £
1008755	8 mm	11 mm	150 mm	6 mm	5.50
1214770	12 mm	12 mm	160 mm	6,5 mm	7.25
1618001	12 mm	16 mm	180 mm	9,5 mm	10.95
1624001	12 mm	16 mm	225 mm	9,5 mm	12.50
2018002	12 mm	20 mm	180 mm	12 mm	13.50
2024002	12 mm	20 mm	225 mm	12 mm	15.95
2031004	12 mm	20 mm	295 mm	12 mm	18.95
2031003	18 mm	20 mm	295 mm	12 mm	19.00
2531005	18 mm	26 mm	310 mm	16 mm	27.00
2536042	18 mm	26 mm	360 mm	16 mm	23.75
2531006	24 mm	26 mm	310 mm	16 mm	21.55
3036007	18 mm	30 mm	360 mm	21 mm	34.75
3036008	24 mm	30 mm	360 mm	21 mm	32.00
3536010	24 mm	35 mm	360 mm	27 mm	36.75

The length measurements refer to the total length of the tools. Our general Terms and Conditions apply. Prices plus VAT, freight and additional costs. Allowing for price and technical changes.



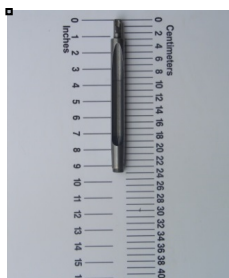
Soil Reliever/ Selvatici

Soil Reliever / Selvatici- Hollow Tines Carbide Tipped

(All Soil Reliever /Selvatici Hollow tines are Side Eject)

Produced from a full steel billet, shatter-proof with long term durability

Part No.	Mounting Ø	Outside Ø	Total Length	Core Ø	Price
1618001H	12 mm	16 mm	180 mm	9 mm	22.75
1624001H	12 mm	16 mm	225 mm	9 mm	26.95
2018002H	12 mm	20 mm	180 mm	12 mm	27.50
2024002H	12 mm	20 mm	225 mm	12 mm	29.50
2024119H	18 mm	20 mm	225 mm	12 mm	29.70
2031004H	12 mm	20 mm	295 mm	12 mm	32.00
2031003H	18 mm	20 mm	295 mm	12 mm	32.00
2531005H	18 mm	26 mm	310 mm	16 mm	38.95
2536042H	18 mm	26 mm	360 mm	16 mm	42.00
2531006H	24 mm	26 mm	310 mm	16 mm	38.95



2024002H



2024119H

The length measurements refer to the total length of the tools. Our general Terms and Conditions apply. Prices plus VAT, freight and additional costs. Allowing for price and technical changes.



Soil Reliever/ Selvatici

Soil Reliever/Selvatici - Cross Tines

Part No.	Mounting Ø	Outside Ø	Total Length	Rib Width	Price £
0820719	8 mm	8 mm	200 mm	1,5 mm	7.25
1214012V	12 mm	12 mm	145 mm	2.5 mm	9.95
1220244	12 mm	12 mm	200 mm	2,5 mm	11.50
1225830	12 mm	12 mm	250 mm	2,5 mm	13.75
1218452	12 mm	18 mm	200 mm	3 mm	13.95
1832453	18 mm	18 mm	320 mm	3 mm	21.95
2235412	18 mm	22 mm	320 mm	5 mm	23.95
2432473	18 mm	24 mm	320 mm	5 mm	26.50
2532454	24 mm	24 mm	320 mm	5 mm	26.50

Soil Reliever /Selvatici - Cross Tines Carbide Tipped

Part No.	Mounting Ø	Outside Ø	Total Len	Rib Width	Price
1220244H	12 mm	12 mm	200 mm	2,5 mm	14.40

Soil Reliever /Selvatici - Flat / Chisel Tine

Part No.	Mounting Ø	Element Width	Element Thickness	Total Length	Price
W1219844	12 mm	19 mm	6 mm	220 mm	13.00

The length measurements refer to the total length of the tools. Our general Terms and Conditions apply. Prices plus VAT, freight and additional costs. Allowing for price and technical changes.



Soil Reliever/ Selvatici

Soil Reliever /Selvatici - Solid Tines

Part No.	Mounting Ø	Outside Ø	Total Length	Price £
0614402	6mm	6 mm	140 mm	1.60
0620455	6 mm	6 mm	175 mm	1.65
0817511	8 mm	8 mm	175 mm	1.95
0820049	8 mm	8 mm	200 mm	2.00
0825064	8 mm	8 mm	250 mm	2.15
0830716	8 mm	8 mm	300 mm	2.25
1208800	8 mm	12 mm	155 mm	3.20
1220055	12 mm	12 mm	200 mm	2.10
1225056	12 mm	12 mm	250 mm	2.20
1230012	12 mm	12 mm	300 mm	2.60
1236013	12 mm	12 mm	360 mm	3.25
1612760	12 mm	16 mm	200 mm	5.95
1612829	12 mm	16 mm	250 mm	6.95
1825779	12 mm	18 mm	250 mm	7.75

(Solid Tines Hardened continued on next page)

The length measurements refer to the total length of the tools. Our general Terms and Conditions apply. Prices plus VAT, freight and additional costs. Allowing for price and technical changes.



Soil Reliever/ Selvatici

Soil Reliever /Selvatici - Solid Tines

Part No.	Mounting Ø	Outside Ø	Total Length	Price £
1825807	18 mm	18 mm	250 mm	4.50
1830014	18 mm	18 mm	300 mm	4.70
1835015	18 mm	18 mm	350 mm	4.80
1840016	18 mm	18 mm	400 mm	5.85
1845043	18 mm	18 mm	450 mm	6.00
2235105	18 mm	22 mm	350 mm	9.00
2535018	18 mm	24 mm	350 mm	8.95
2240803	22 mm	22 mm	400 mm	9.00
2535019	24 mm	24 mm	350 mm	8.75
2540020	24 mm	24 mm	400 mm	8.95
2545021	24 mm	24 mm	450 mm	8.95



The length measurements refer to the total length of the tools. Our general Terms and Conditions apply. Prices plus VAT, freight and additional costs. Allowing for price and technical changes.



Toro – Hollow Tines

Part No.	Mounting Ø	Outside Ø	Total Length	Core Ø	Price
9513123 Side Eject	9,5 mm	9,5 mm	125 mm	5 mm	5.05
9514745 Side Eject	9,5 mm	11 mm	145 mm	6 mm	5.95
1912807 Side Eject	19 mm	12 mm	155 mm	6 mm	6.95
1912130	19 mm	12,7 mm	125 mm	10 mm	2.10
1912771 Side Eject	19 mm	12,7 mm	125 mm	9 mm	3.70
1914132	19 mm	12,7 mm	145 mm	10 mm	2.50
1914415 Side Eject	19 mm	12,7 mm	145 mm	10 mm	3.75
1916887	19 mm	12,7 mm	165 mm	10 mm	2.80
1615765 Side Eject	19 mm	16 mm	155 mm	9,5 mm	9.30
1912134	19 mm	16 mm	125 mm	13 mm	2.15
1912761 Side Eject	19 mm	16 mm	125 mm	12 mm	3.50
1914136	19 mm	16 mm	145 mm	13 mm	2.50

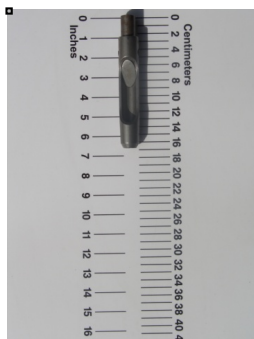
(Hollow Tines Hardened continued on next page)

The length measurements refer to the total length of the tools. Our general Terms and Conditions apply. Prices plus VAT, freight and additional costs. Allowing for price and technical changes.

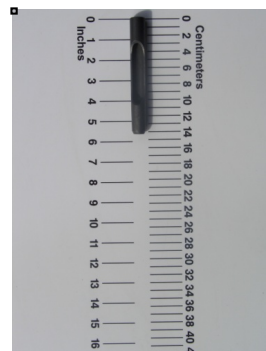


Toro – Hollow Tines

Part No.	Mounting Ø	Outside Ø	Total Length	Core Ø	Price £
1914417 Side Eject	19 mm	16 mm	145 mm	12 mm	3.75
2015766 Side Eject	19 mm	20 mm	155 mm	13 mm	8.75
1916886	19 mm	16 mm	165 mm	13 mm	2.80
2514260 Side Eject	19 mm	26 mm	140 mm	16 mm	10.25
2514266 Side Eject	22,3 mm	26 mm	140 mm	16 mm	10.25



2514260



1914417

The length measurements refer to the total length of the tools. Our general Terms and Conditions apply. Prices plus VAT, freight and additional costs. Allowing for price and technical changes.



Toro – Hollow Tines Carbide Tipped

Part No.	Mounting Ø	Outside Ø	Total Length	Core Ø	Price £
9513123H Side Eject	9,5 mm	11 mm	145 mm	5,5 mm	7.95
1912807H Side Eject	19 mm	12 mm	155 mm	6 mm	9.75
1912131H	19 mm	12,7 mm	125 mm	9 mm	9.50
1914133H	19 mm	12,7 mm	145 mm	9 mm	10.50
1914416H Side Eject	19 mm	12,7 mm	145 mm	9 mm	12.95
1615765H Side Eject	19 mm	16 mm	155 mm	9 mm	13.95
1912135H	19 mm	16 mm	125 mm	12 mm	10.00
1914137H	19 mm	16 mm	145 mm	12 mm	10.50
2014027H Side Eject	19 mm	16 mm	145 mm	12 mm	13.00
2015766H Side Eject	19 mm	20 mm	155 mm	12 mm	13.95

Toro –Konispoon® Round Needle

Part No.	Mounting Ø	Outside Ø	Total Length	Price £
9505847K	9,5 mm	5 mm	140 mm	3.00
9505846K	9,5 mm	5 mm	160 mm	3.15
9506842K	9,5 mm	6 mm	140 mm	3.00
9506845K	9,5 mm	6 mm	160 mm	3.15

The length measurements refer to the total length of the tools. Our general Terms and Conditions apply. Prices plus VAT, freight and additional costs. Allowing for price and technical changes.



Toro – Cross Tines

Part No.	Mounting Ø	Outside Ø	Total Length	Rib Width	Price £
9510720	9,5 mm	9,5 mm	102 mm	1,5 mm	6.60
9516825	9,5 mm	9,5 mm	160 mm	1,5 mm	7.95
9514120	9,5 mm	12 mm	135 mm	2,5 mm	9.50
1916900	19 mm	12 mm	160 mm	2,5 mm	9.25
2019457	19 mm	20 mm	140 mm	3 mm	11.50
2419459	19 mm	24 mm	140 mm	5 mm	15.50
2619461	19 mm	26 mm	140 mm	5 mm	15.50
2422460	22,3 mm	24 mm	140 mm	5,mm	15.00
2622462	22,3 mm	26 mm	140 mm	5 mm	15.50

Toro – Cross Tines Carbide Tipped

Part No.	Mounting Ø	Outside Ø	Total Length	Rib Width	Price £
9514120H	9,5 mm	12 mm	135 mm	2,5 mm	13.95
1214012H	19 mm	12 mm	145 mm	2,5mm	13.95
1274121H	12,7 mm	12 mm	140 mm	2,5 mm	13.50

The length measurements refer to the total length of the tools. Our general Terms and Conditions apply. Prices plus VAT, freight and additional costs. Allowing for price and technical changes.



Toro – Flat / Chisel Tines

Part No.	Mounting Ø	Element Width	Element Thickness	Total Length	Price £
1219841	19 mm	19 mm	6 mm	140 mm	9.95
1219842	19 mm	19 mm	6 mm	160 mm	11.50

Toro –Solid Tines

Part No.	Mounting Ø	Outside Ø	Total Length	Price £
0105180	5 mm elbow	5 mm	180 mm	2.20
0108180	8 mm elbow	8 mm	180 mm	2.85
0614402	6 mm	6 mm	140 mm	1.60
0815052	8 mm	8 mm	150 mm	2.10
9512450	9,5 mm	9,5 mm	120 mm	1.60
9515045	9,5 mm	9,5 mm	150 mm	2.25
1906872	19 mm	6 mm	160 mm	4.95
1908873	19 mm	8 mm	160 mm	4.95
1910929	19 mm	10 mm	160 mm	4.95
1912774	19 mm	12 mm	160 mm	4.95
1916785	19 mm	16 mm	160 mm	4.95
2231685	22,3 mm	16 mm	140 mm	8.95



The length measurements refer to the total length of the tools. Our general Terms and Conditions apply. Prices plus VAT, freight and additional costs. Allowing for price and technical changes.



Coremaster - Hollow Tines

Part No.	Mounting Ø	Colour of Holder	Outside Diameter	Total Length	Core	Price £
9513123-90 Side Eject	9.5 mm	4	9.5 mm	90 mm	5 mm	4.95
9513123 Side Eject	9.5 mm	4	9.5 mm	130 mm	5 mm	5.05
1852138	18.5 mm	2	16 mm	125 mm	10 mm	3.85
1612256	22.3 mm	2	19 mm	115 mm	12.7 mm	3.95

Coremaster - Hollow Tines Carbide Tipped

Part No.	Mounting Ø	Colour of Holder	Outside Diameter	Total Length	Core	Price £
1852139H	18.5 mm	2	16 mm	127 mm	9.5 mm	9.95

Coremaster - Cross Tines

Part No.	Mounting Ø	Colour of Holder	Outside Diameter	Total Length	Rib Width	Price £
9510720	9.5 mm	4	9.5 mm	102 mm	1.5 mm	6.60
9514120	9.5 mm	4	12 mm	135 mm	2.5 mm	9.50

Coremaster - Cross Tines Carbide Tipped

Part No.	Mounting Ø	Colour of Holder	Outside Diameter	Total Length	Rib Width	Price £
9514120H	9.5 mm	4	12 mm	135 mm	2.5 mm	13.95

Coremaster - Solid Tine

Part No.	Colour of Holder	Outside Diameter	Total Length	Price £
9512450	4	9.5 mm	115 mm	1.60

The length measurements refer to the total length of the tools. Our general Terms and Conditions apply. Prices plus VAT, freight and additional costs. Allowing for price and technical changes.



Wiedenmann – Hollow Tines

(All Wiedenmann tines are Side Eject)

Produced from a full steel billet, shatter-proof with long durability. Standard Taper 3° or Taper 7° for GXI

Part No.	Mounting Ø	Outside Ø	Total Length	Core Ø	Price £
W1008755	8 mm	11 mm	150 mm	6 mm	5.95
W1214770	12 mm	12 mm	160 mm	6,5 mm	7.50
W1618001	12 mm	16 mm	180 mm	9,5 mm	10.75
W1624001	12 mm	16 mm	225 mm	9,5 mm	12.50
W2018002	12 mm	20 mm	180 mm	12 mm	13.50
W2024002	12 mm	20 mm	225 mm	12 mm	15.95
W2031004	12 mm	20 mm	295 mm	12 mm	19.75
W2031461	Taper 3°	20 mm	295 mm	12 mm	20.95
W2522819	Taper 3°	26 mm	250 mm	16 mm	21.75
W2536042	Taper 3°	26 mm	360 mm	16 mm	32.00
W3025822	Taper 3°	30 mm	250 mm	21 mm	25.95
W3030385	Taper 3°	30 mm	360 mm	21 mm	35.00
W3530386	Taper 3°	35 mm	360 mm	27 mm	36.50
W2031901	Taper 7°	20 mm	295 mm	12 mm	19.95

The length measurements refer to the total length of the tools. Our general Terms and Conditions apply. Prices plus VAT, freight and additional costs. Allowing for price and technical changes.



Wiedenmann – Hollow Tines Carbide tipped

Part No.	Mounting Ø	Outside Ø	Total Length	Core Ø	Price £
W1618001H	12 mm	16 mm	180 mm	9 mm	25.95
W1624001H	12 mm	16 mm	225 mm	9 mm	26.95
W2018002H	12 mm	20 mm	180 mm	12 mm	27.50
W2024002H	12 mm	20 mm	225 mm	12 mm	27.90
W2031004H	12 mm	20 mm	295 mm	12 mm	32.50
W2031461H	Taper 3°	20 mm	295 mm	12 mm	32.50
W2524068H	Taper 3°	26 mm	310 mm	180 mm	41.00

Wiedenmann – Terra Rake Replacement Tine

Part No.	wire Ø	Coil Ø	Total Length	Width	Price £
W1196554	4.6 mm	41 mm	260 mm	65 mm	5.00



The length measurements refer to the total length of the tools. Our general Terms and Conditions apply. Prices plus VAT, freight and additional costs. Allowing for price and technical changes.



Wiedenmann – Cross Tines

Part No.	Mounting Ø	Outside Ø	Total Length	Rib Width	Price £
W0820719	8 mm	8 mm	200 mm	1,5 mm	7.50
W1214012	12 mm	12 mm	145 mm	2,5 mm	9.95
W1220244	12 mm	12 mm	200 mm	2,5 mm	11.50
W1225813	12 mm	12 mm	250 mm	2,5 mm	13.50
W1218452	12 mm	18 mm	200 mm	3 mm	13.95
W1832453	Taper 3°	18 mm	320 mm	3 mm	21.95
W2235413	Taper 3°	22 mm	320 mm	5 mm	26.50
W2532454	Taper 3°	24 mm	320 mm	5 mm	25.00

Wiedenmann – Cross Tines Carbide Tipped

Part No.	Mounting Ø	Outside Ø	Total Length	Rib Width	Price £
W1214012H	12 mm	12 mm	145 mm	2,5 mm	13.95
W1220244H	12 mm	12 mm	200 mm	2,5 mm	14.40

Wiedenmann - Flat / Chisel Tine

Part No.	Mounting Ø	Outside Ø	Total Length	Rib Width	Price £
W1219844	12 mm	19 mm	220 mm	6 mm	13.00

The length measurements refer to the total length of the tools. Our general Terms and Conditions apply. Prices plus VAT, freight and additional costs. Allowing for price and technical changes.



Wiedenmann – Solid Tines

Part No.	Mounting Ø	Outside Ø	Total Length	Price £
W0817511	8 mm	8 mm	175 mm	1.95
W0820049	8 mm	8 mm	200 mm	2.20
W0825064	8 mm	8 mm	250 mm	2.40
W0830716	8 mm	8 mm	300 mm	2.25
 W1208844	12 mm	8 mm	200 mm	3.95
 W1201044	12 mm	10 mm	200 mm	3.95
W1220055	12 mm	12 mm	200 mm	2.10
W1225056	12 mm	12 mm	250 mm	2.20
 W1230012	12 mm	12 mm	300 mm	2.60
 W1236013	12 mm	12 mm	360 mm	3.25
W1612760	12 mm	16 mm	200 mm	6.15
W1612837	12 mm	16 mm	250 mm	6.95
W1820823	12 mm	18 mm	200 mm	7.50
W1825836	12 mm	18 mm	250 mm	7.75

The length measurements refer to the total length of the tools. Our general Terms and Conditions apply. Prices plus VAT, freight and additional costs. Allowing for price and technical changes.



Wiedenmann – Solid Tines Standard Taper 3° Or Taper 7° for GXI

Part No.	Mounting Ø	Outside Ø	Total Length	Price £
W1830770	Taper 3°	18 mm	300 mm	8.95
W1827103	Taper 3°	18 mm	350 mm	8.95
W2025727	Taper 3°	20 mm	300 mm	9.00
★ W2035716	Taper 3°	20 mm	350 mm	9.50
W2042717	Taper 3°	20 mm	420 mm	11.00
W2225821	Taper 3°	22 mm	300 mm	10.00
★ W2235126	Taper 3°	22 mm	350 mm	10.50
W2242407	Taper 3°	22 mm	420 mm	12.50
W2525820	Taper 3°	24 mm	300 mm	10.50
★ W2535018	Taper 3°	24 mm	350 mm	12.00
W2440751	Taper 3°	24 mm	420 mm	12.95
W1830840	Taper 7°	18 mm	300 mm	8.00
W2030876	Taper 7°	20 mm	300 mm	8.00
W2230889	Taper 7°	22 mm	300 mm	8.95

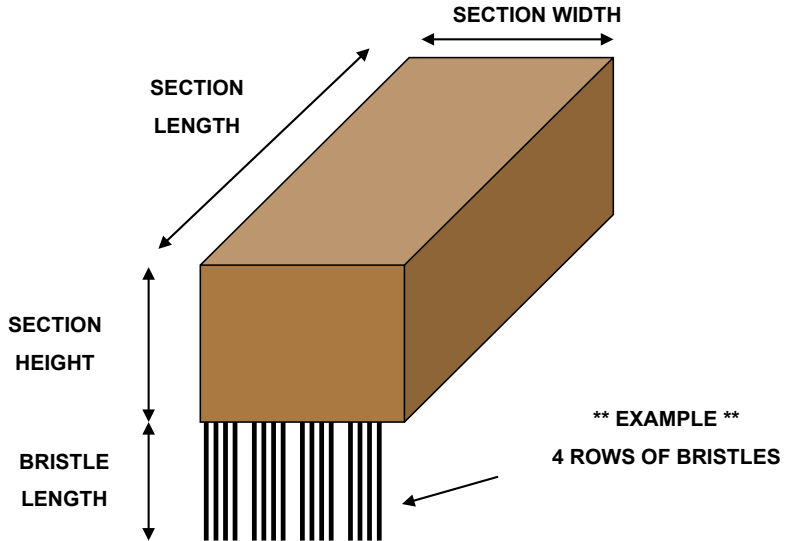
The length measurements refer to the total length of the tools. Our general Terms and Conditions apply. Prices plus VAT, freight and additional costs. Allowing for price and technical changes.



FAX ON : 01371

705002

CUSTOM BRUSH REQUEST FORM

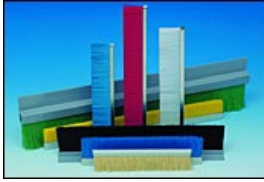


PLEASE COMPLETE DETAILS BELOW AND FAX:

NAME	
CONTACT No	
MACHINE MANUFACTURER	
MACHINE MODEL	
PLAYING SURFACE BRUSH TO BE USED ON (E.G. BOWLING GREEN)	
QUANTITY OF BRUSHES REQUIRED	
BRUSH SECTION MATERIAL (E.G. PLASTIC/WOOD)	
LENGTH OF SECTION (mm)	
WIDTH OF SECTION (mm)	
HEIGHT OF SECTION (mm)	
BRISTLE LENGTH (mm)	
BRISTLE COLOUR	
BRISTLE THICKNESS (mm)	
NUMBER OF BRISTLE ROWS	



Brushes



Replacement Brush Sections



Thatchaway (Greentek) (Replacement brush only, shaft not included)

Part No.	Dimensions	Description	£/Piece
TD55547R	55.5cm x 1 1/2"	Rotary Brush, Regular Bristle (Black)	85.00
TD55547F	55.5cm x 1 1/2"	Rotary Brush, Firm Bristle (Blue)	85.00

Wessex SC12 4ft Sweeper Collector

Part No.	Dimensions	Description	£/Piece
TD2870	60cm x 190 mm	Brush section, white/black	20.00
TD7570	60cm x 190 mm	Brush section, yellow	20.00

Tomlin RC120/RC180 Sweeper Collector

Part No.	Dimensions	Description	£/Piece
TDRC120R	600 mm x 190 mm	RC120 Section (BLACK) REGULAR	21.00
TDRC120F	600 mm x 190 mm	RC120 Section (YELLOW) FIRM	21.00
TDRC180R	1800 mm x 190mm	RC180 Section (BLACK) REGULAR	68.00
TDRC180F	1800 mm x 190 mm	RC180 Section (YELLOW) FIRM	68.00



TD120R & TDRC120F



TD2870 & TD7570

Our general Terms and Conditions apply.
Prices plus VAT, freight and additional costs. Allowing for price and technical changes.





Sisis - Auto / Trio Rotorrake, Litamisa, Litamina, Quadraplay

Part No.	Dimensions	Description	£/Piece
TD1520	2ft X 135mm	Quadraplay, 2ft Brush section	28.00
TD35377	18.5" x 80mm	Auto/Trio rotorake, Helical Brush	51.00
TD33872	-	Auto Rotorake Mk5, Helical Brush	62.00
TDF35919	-	Auto Rotorake synthetic Surface	140.00
TD35377C	18.5" x 80mm	Complete Brush Assy inc. Shaft & bearings	136.00
TDF36271	-	Rotorake 600	125.00
TDF33872	-	Rotorake 500	87.50
TD3623	35" x 190mm	Litamisa, 3ft Brush section (old style-6ft)	21.25
TD31835	3ft x 120mm	Litamisa, Helical Brush RH (high lift 6ft)	185.00
TD31836	3ft x 120 mm	Litamisa, Helical Brush LH (high lift 6ft)	185.00
TD31604	2ft x 140 mm	Litamisa, Helical Brush RH (4ft)	136.00
TD31605	2ft x 140mm	Litamisa, Helical Brush LH (4ft)	136.00
TD36698	-	Litamisa, 1500 LH	170.00
TD36699	-	Litamisa, 1500 RH	170.00
TDF31023	-	Brush Strip Litamisa (FRONT)	76.50
TDDF31038	-	Brush Strip Litamina (FRONT)	72.50
TDF36729	-	Brush Strip Litamina 1500	73.00
TDD6744	1280mm	Top Spread	255.00
TDF31394	996mm	Powaspread	240.00
TDF32970	840mm	Auto Spread	240.00
TDD7326	4ft	Litamisa Sweeper Old Type 4ft	20.50
TDF33772	-	OSCA 3	51.00
TDF31346	6ft	Drag Brush Manual Type Medium	52.00
TDF31347	6ft	Drag Brush Manual Type Stiff	52.00



Bedknives

Jacobsen Bedknives – Supplied with Screws

TD Ident. No.	OEM part number	Holes	Description	£/Piece
9901471	5000927	13	GK II, IV & V22"Tourmnt. 1/16" (Sub.to Avail.)	29.15
TP-503478-U	503478	13	GK II, IV & V22 Thin 1/8" (ULTRA)	29.15
TP-503477	503477	13	GK II, IV & V22 Thick 3/16"	26.95
TP-503654	503654	11	LF3810	31.35
TP-503460	503257/460	13	LF3800 Thick 7/16" Fairway/3400	31.35
TP-503363	503363/550	13	1671/1684D/1900D Tri King 30"	31.35
TP-554284	554284	11	Tri King 26" 1671/1684D/1900D	31.35

Ransomes Bedknives – Supplied with Screws

TD Ident. No.	OEM part number	Holes	Description	£/Piece
9901021	MBA7024A	7	213/350 & 30" Single lip Gang Mower	27.00
9901429	MBA7050	7	Marquis 24" / 61 cm	26.75
9901119	MBA7017	6	Marquis 20" / 51 cm, subject to avail.	26.25
9901009	MBA7051	8	Autocertes 20", subject to avail.	18.60
9901089	MBA7057	8	Autocertes 20"Shaver, subject to avail.	17.25
9901439	MBA7083	8	Supercertes 24" (To fit 61), subject to avail.	20.80
9901841	MBA7092	8	Supercertes 24"Shaver (fit 61),sub.to avail.	17.95
9901009	MBA7051	8	Supercertes 20" (To fit 51), subject to avail.	18.60
99011201	39023	13	G.Plex/E.Plex (subject to availability)	29.95

The length measurements refer to the total length of the tools. Our general Terms and Conditions apply. Prices plus VAT, freight and additional costs. Allowing for price and technical changes.



Toro Bedknives – Supplied with Screws

TD Ident. No.	OEM part number	Holes	Description	£/Piece
TP-638600	63-8600	13	GM300/3000 super thick 5/16"	28.00
TP-946392	62-2500	13	GM300/3000 & GM1000 thick 3/16" (subject to availability)	28.00
TP-934264-U	93-4264	13	GM300/3000 & GM1000 1/8" (ULTRA)	29.15
TP-638610	63-8610	7	RM223D/5100D & 5300D 1/4"	27.50
9901049	59-5890	10	RM335D/450D & 4500D (subject to availability)	28.85
TP-625180	62-5180	10	RM216/2300D/2600D & 3100D/27"	36.65
TP-476680	47-6680	11	Reelmaster Low Cut	30.00
TP-497660	49-7660	11	Reelmaster High Cut	36.65

John Deere Bedknives – Supplied with Screws

TD Ident. No.	OEM part number	Holes	Description	£/Piece
TP-17532	ET17532	13	220/220A/2243 & 2500 thick 3/16"	31.30
TP-17533-U	17533	13	220/220A/2243 & 2500 1/8" (ULTRA)	29.15
TP-17752	ET17752	10	2653 & 2653A 26" STANDARD	31.30
99011251	MT2396	10	2653 & 2653A 26" LOW CUT (subject to availability)	31.30
TP-1973	MT1973	12	2653 & 2653A 30"	31.30
TP-17767	ET17767	13	3215 & 3235 Medium cutting unit	31.30

The length measurements refer to the total length of the tools. Our general Terms and Conditions apply. Prices plus VAT, freight and additional costs. Allowing for price and technical changes.



Accessories & Equipment



Back-Lapping Paste

Part No.	Grade	Weight	£/Piece
TD2500EC	30/60 - Extra Course	2.5Kg	19.95
TD5000EC	30/60 - Extra Course	5Kg	36.95
TD2500C	80 - Course	2.5Kg	19.95
TD5000C	80 - Course	5Kg	36.95
TD2500M	120 - Medium	2.5Kg	19.95
TD5000M	120 - Medium	5Kg	36.95
TD2500F	220 - Fine	2.5Kg	19.95
TD5000F	220 - Fine	5Kg	36.95

"This is a Market Leading product. Not only does it offer outstanding quick results but as it's water based it creates less impact to the environment, I would recommend to any Sportsturf or Greenkeeping professional"

Andrew Beard of Sportsturf Machinery Services, with over 22 years service in both the service and sales side of the industry

The length measurements refer to the total length of the tools. Our general Terms and Conditions apply. Prices plus VAT, freight and additional costs. Allowing for price and technical changes.



Digital Accu-Guage

**THE PREFERRED
HEIGHT OF CUT SETTING
TOOL FOR THE
PROFESSIONAL
GRANDSMAN &
GREENKEEPER**

£ 225.00



DayLinks are Pleased To Offer Our Bespoke Specification As Follows:-

- **18" Bar length**

- Most popular size to suit Greens, Tees and Outfield cutting units

- **Digital**

- For Ease of Reading & Setting

- **Metric Nomination**

- For UK & Europe



- **Aluminium Carry Case**

- Protection for your Guage, with Die Cut Foam For Perfect Fit

The length measurements refer to the total length of the tools. Our general Terms and Conditions apply. Prices plus VAT, freight and additional costs. Allowing for price and technical changes.



Accessories & Equipment

Top Link Assemblies

****Large selection of linkage pins and accessories available from stock****

Part No.	Category	Description	£/Piece
TDLK1000	1 & 1	Top Link Assy. Min.L.555mm, Max.L.755mm	22.50
TDLK1003	1 & 1	Top Link Assy.Min.L.620mm, Max.L.825mm	22.50
TDLK1004	1 & 2	Top Link Assy.Min.L.630mm, Max.L.830mm	22.50
TDLK1056	1 & 1	Top Link Assy.Min.L.485mm, Max.L.685mm	22.50
TDFM3004	1 & 1	Hyd Top Link ,Min.L.470mm, Max.L.680mm supplied complete with Hose Kit & ½" Male Couplings	200.00
TDFM3006	2 & 2	Hyd Top Link ,Min.L.620mm, Max.L.880mm supplied complete with Hose Kit & ½" Male Couplings	330.00

PTO Shaft Complete

**** Other PTO Shafts are available to order, please ask for further details.**

Part No.	PTO Series	HP @ PTO	Description	£/Piece
TDPTO1000	2	20	Series 2 PTO Shaft, Overall length 860 mm	90.00
TDPTO1003	4	31	Series 4 PTO Shaft, Overall length 860 mm	110.00
TDPTO1005	5	63	Series 5 PTO Shaft, Overall length 860 mm	140.00

PTO Safety Cover

TDPTO1500	PTO Guard to suit TDPTO1000, includes guard retainer TDPTO 1603		34.25
TDPTO1502	PTO Guard to suit TDPTO1003, includes guard retainer TDPTO 1604		44.90
TDPTO1504	PTO Guard to suit TDPTO1005, includes guard retainer TDPTO 1606		56.25

The length measurements refer to the total length of the tools. Our general Terms and Conditions apply. Prices plus VAT, freight and additional costs. Allowing for price and technical changes.

Accessories & Equipment

REPLACEMENT SEATS



XB180 shown in yellow, XB200 shown in black



Underside view
(XB150/XB180/XB200)

XB150

LOW BACK SEAT

Colour option



E.g. Small Triple Cylinder Mower or
Small Rotary Ride on Mower

£76.50

XB180

MEDIUM BACK SEAT

Colour Option



E.g. Workman or Gator

£86.50

XB200

HIGH BACK SEAT

Colour Option



E.g. Jacobsen, Toro or John Deere

£98.50

XBSwitch

Operator Presence Switch

£19.50

All seats have a weather proof finish with a superior filling for comfort. They are backed with a hard black plastic skeleton for longevity, with an integral hole for operators Presence Device and multiple mounting holes as illustrated.

The length measurements refer to the total length of the tools. Our general Terms and Conditions apply. Prices plus VAT, freight and additional costs. Allowing for price and technical changes.





Accessories & Equipment

TAS TRIMMER

The TAS Trimmer blade mounts on any straight shaft trimmer. Once installed, the TAS Trimmer is ready to trim grass away from sprinkler heads, valve boxes, yardage markers and tee markers in a flash. The amount of time and energy saved is so great that it's nearly immeasurable. The TAS Trimmer is the #1 choice of landscape & golf course irrigation professionals.

FITMENT

The TAS Trimmer fits any straight shaft trimmer on the market and mounts like a brush cutter attachment. Simply remove the original trimmer head and attach the TAS Trimmer using the brush cutter adapter kit for your make and model.



**ECHO brand trimmers will need the 20mm bushing - supplied with your TAS Trimmer.*

**Bent shaft trimmers are NOT approved for use with the TAS Trimmer*

Part No.	Size	£/Piece
TAS375	3.75" inch	25.00
TAS45	4.5" inch	25.00
TAS55	5.5" inch	25.00
TAS7	7" inch	25.00
TAS75	7.5" inch	25.00
TAS775	7.75" inch	25.00
TAS8	8" inch	30.00
TAS85	8.5" inch	30.00
TAS10	10" inch	45.00

Compatible with all irrigation systems including Rainbird, Hunter, Toro, Buckner, Bear, R.L. Nelson, K-Rain, Legacy, John Deere and Weathermatic.

Our general Terms and Conditions apply. Prices plus VAT, freight and additional costs. Allowing for price and technical changes.



A Range of rubber or steel dragmats for dispersal of top dressing.

Raycam Easy Drag Dragmats come in a variety of different sizes, and are available in heavy-duty reinforced rubber or steel construction. Dragmats are ideal for rubbing-in top dressings, dew and clippings dispersal. Small mats can be hand-pulled, while the wider units are more suited to towing of mounting on the optional 3-point frame. Available in 4 different widths, and 2 different thicknesses (rubber) for a variety of different handling applications and tasks.

Raycam Easy Drag Rubber Dragmats – 12mm thick

Part No.	Size	Description	£/Piece
N2158	1.2m wide x 1.8m deep	Raycam Easy Drag Rubber Dragmats – 12mm thick	325.00
N2159	1.8m wide x 1.8m deep	Raycam Easy Drag Rubber Dragmats – 12mm thick	445.00
N2160	2.4m wide x 1.8m deep	Raycam Easy Drag Rubber Dragmats – 12mm thick	545.00
N2161	3.0m wide x 1.8m deep	Raycam Easy Drag Rubber Dragmats – 12mm thick	680.00



Raycam Easy Drag



Raycam Heavy- Duty Rubber Dragmats – 20mm thick

Part No.	Size	Description	£/Piece
N2697	1.2m wide x 1.8m deep	Raycam Easy Drag Rubber Dragmat – 20mm thick	565.00
N2542	1.8m wide x 1.8m deep	Raycam Easy Drag Rubber Dragmat – 20mm thick	800.00
N2543	2.4m wide x 1.8m deep	Raycam Easy Drag Rubber Dragmat – 20mm thick	945.00
N2544	3.0m wide x 1.8m deep	Raycam Easy Drag Rubber Dragmat – 20mm thick	1045.00



Raycam Products

Easy-Drag Optional Accessories

Description	£/Piece
3-Point Linkage Frame	520.00
Handle bar	16.00



Raycam EasyDrag



**FREE CARRIAGE
ON ANY DRAGMAT**
UK MAINLAND ONLY.

Standard Steel Dragmats – 12mm thick

Part No.	Size	Description	£/Piece
N3369	0.9m wide x 1.2m deep	Standard Steel Dragmat – 12mm thick	100.00
N2407	1.8m wide x 1.2m deep	Standard Steel Dragmat – 12mm thick	200.00
N2406	2.4m wide x 1.2m deep	Standard Steel Dragmat – 12mm thick	395.00



Raycam V-Brush

Tractor mounted triple V-Brush for natural & synthetic turf

The Raycam Triple V-Brush is a tractor mounted implement for brushing in top-dressing removing worm casts, standing up grass prior to mowing and general presentation on natural turf. The V-Brush is also suitable for use on sand-filled and 3-G synthetic pitches for taking out scuffs & foot prints, re-distributing infill and promoting a vertical sward. The reversible mounting frame enables the V-Brush to be mounted on the rear or front linkage on tractors of 18hp and above. Individual brush sections can easily be replaced when worn.



Raycam V-Brush

Part No.	Specification	Description	£/Piece
N3903	Working Width 1.8m Weight 120kg Power requirement 18hp	Tractor Mounted Triple V-Brush for natural & Synthetic Turf	995.00

Replacement Brushes	£/Piece
Complete Set of Replacement Bush Sections	325.00



Mobile : 07799 332295

Email : mark@daylinks.co.uk



Raycam Products

Imants Penetrometer

Hand operated professional compaction meter

The Imants penetrometer is a hand held, professional compaction meter to locate and monitor the compaction levels in the soil / root-zone. Understanding the degree of compaction enables the right procedures to be taken to eliminate excessive levels. Lack of air in compacted soil is a major problem, as the roots need access to oxygen to survive. As a rule of thumb, compaction greater than 20 bar pressure (285 psi) will cause problems and action should be taken to relieve the compaction in the rootzone.

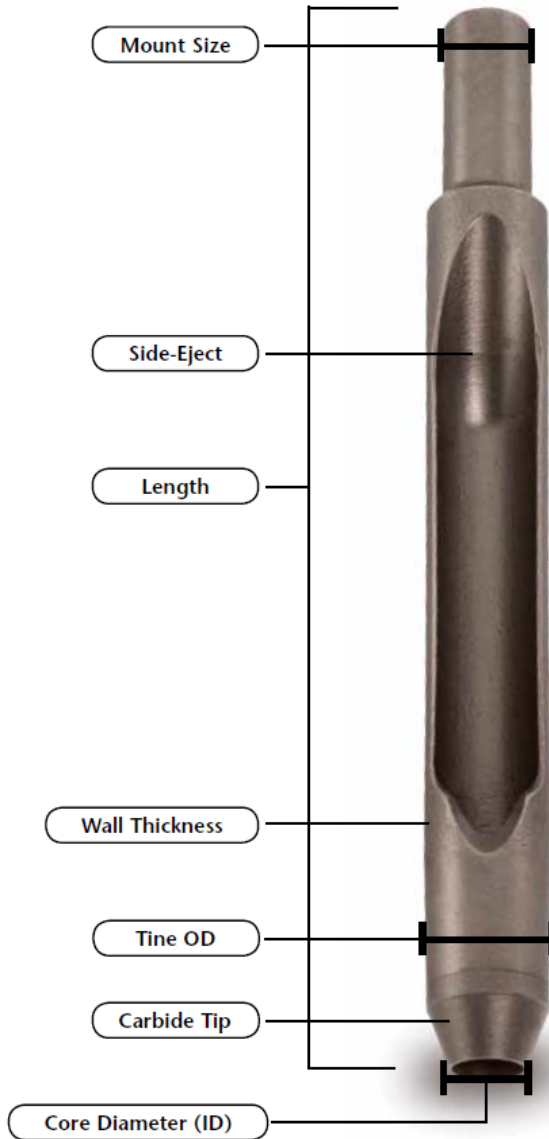


Imants Penetrometer

Part No.	Description	£/Piece
IM005038	Hand Operated Professional compaction meter	240.00



TINE TERMINOLOGY EXPLAINED



FULL RANGE OF ADAPTORS AVAILABLE FOR MOST MACHINES SEE PAGE 4 FOR COMPLETE LISTING





**Replacement Tines for Charterhouse
Vertidrain, Weidenmann Terraspikes,
Ryan, Toro, John Deere, & Groundsman
Corers and many more !**

Thatchaway, Graden & Sisis Scarifiers.

**Replacement brushes for Sisis,
Thatchaway, Tomlin & Wessex Sweepers.**

SPECIALISTS IN CARBIDE TIPPED TINES